

Technical sheet :

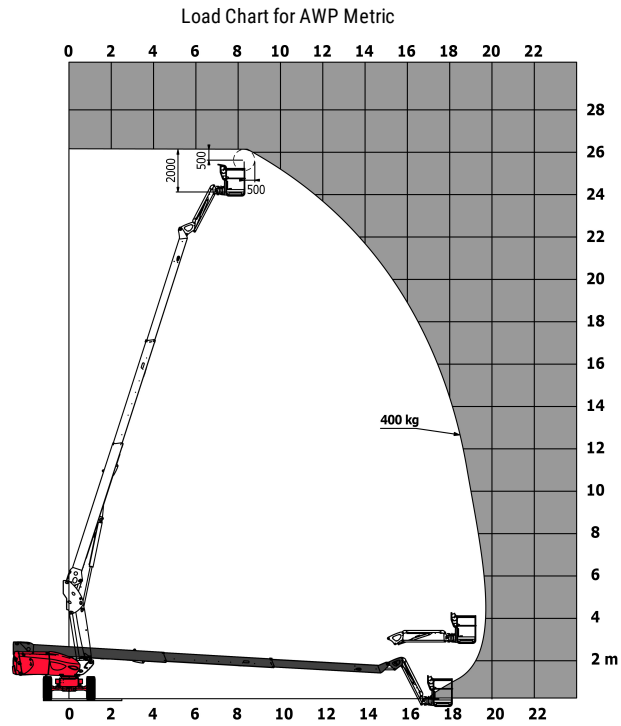
# **TJ 80+**

---

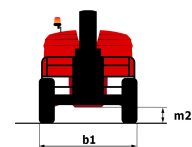
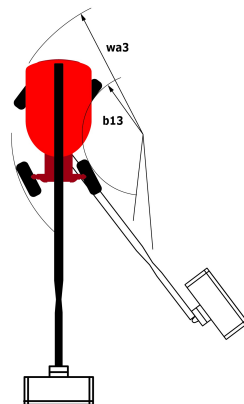
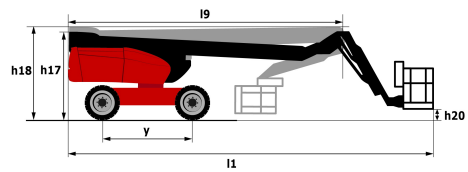


Capacities		Metric
Working height	h21	25.72 m
Platform height	h7	23.89 m
Max. outreach	r1	19.70 m
Pendular arm rotation (bottom)		+63 °
Platform capacity	Q	408 kg
Turret rotation		360 °
Platform rotation (right / left)		90 ° / 90 °
Number of people (inside / outside)		3 / 3
Weight and dimensions		
Platform weight*		16305 kg
Platform dimensions (length x width)	lp / ep	2.30 m x 0.90 m
Overall width	b1	2.48 m
Overall length	l1	10.84 m
Overall height	h17	2.71 m
Overall length (stowed)	l9	7.88 m
Overall height (stowed)	h18	2.80 m
Floor height (access)	h20	0.40 m
Jib length	l13	2.40 m
Counterweight offset (turret at 90°)	a7	1.43 m
Internal turning radius (over tyres)	b13	1.97 m
External turning radius	Wa3	4.35 m
Ground clearance at centre of wheelbase	m2	0.41 m
Wheelbase	y	2.80 mm
Performances		
Drive speed - stowed		4.70 km/h
Drive speed - raised		0.80 km/h
Gradeability		40 %
Permissible leveling		4 °
Wheels		
Tyres type		Solid Tyres Cured-On
Dimensions of front wheels / rear wheels		1,02 x 0,36 - 1,02 x 0,36
Drive wheels (front / rear)		2 / 2
Steering wheels (front / rear)		2 / 2
Braking wheels (front / rear)		2 / 2
Engine/Battery		
Engine brand / model		Kubota - D1803-CR-TIE4B
Engine norm		Stage V
I.C. Engine power rating / Power (kW)		49.60 Hp / 37 kW
Miscellaneous		
Ground Pressure		21.30 daN/cm <sup>2</sup>
Hydraulic Pressure		400 Bar
Hydraulic tank capacity		94 l
Fuel tank		72 l
Vibration on hands/arms		< 0.50 m/s <sup>2</sup>
Standards compliance		
This machine is in compliance with:		ANSI A92.20-2018 CSA B354.6 ICES-002-Issue 6 Standard Canadian EMC

# Load chart



# Dimensional drawing



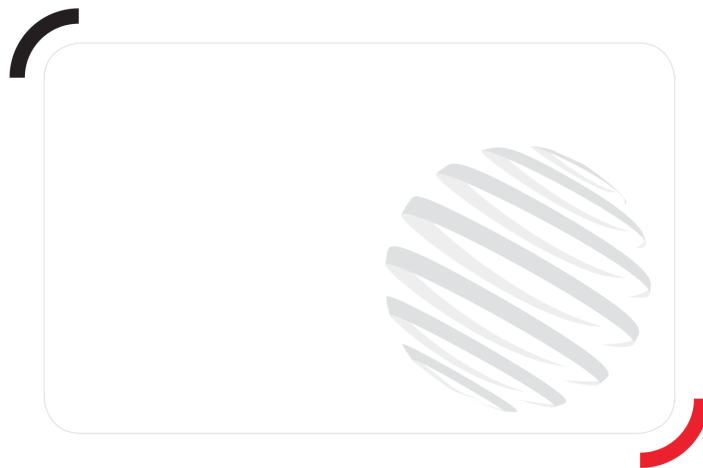
# Equipment

## Standard

110 V plug with differential circuit breaker  
4 wheel drive  
4 wheel steer with crab mode  
Audible alarm and illuminated indicator lamp (leveling, overload, lowering)  
Backup electrical pump  
Battery cut-off  
CAN bus technology  
Continuous turret rotation  
Differential locking on rear axle  
Easy Manager  
Electronic platform compensation  
Emergency stop button in platform and on frame  
Engine mounted on sliding platform  
Fuel gauge with low level indicator  
Hour meter  
Integrated diagnostic assistance  
Large basket with three entries  
Lift and drive  
Operator presence pedal  
Oscillating front axle  
Rear axle with limited slip differential  
Remote control for transport  
Turret orientation information  
Water heater

## Optional

Additional storage boxes  
Air predisposition  
Beep on every movement  
Beep upon travel  
Biodegradable oil  
Catalytic cleaner  
Coded anti-start  
Combination Radiator & Hydraulic Oil Cooler  
Extreme cold diesel fuel  
Extreme cold oil  
Key lock on fuel tank  
Non-marking tyres  
Onboard generator (5 kW)  
Panel support kit  
SMS : Safe Man System  
Tube support kit  
Turret cover with key lock  
Welder ready package  
Working light



Siège Social

430 rue de l'Aubinière - 44150 Ancenis Cedex - France

Tel: +33(0)2 40 09 10 11 - Fax: +33 (0)2 40 09 10 97

[www.manitou.com](http://www.manitou.com)



This brochure describes versions and configuration options for Manitou products which may be fitted with different equipment. The equipment described in this brochure may be standard, optional or not available depending on version. Manitou reserves the right to change the specifications shown and described at any time and without prior warning. The manufacturer is not liable for the specifications given. For more information, contact your Manitou dealer. Non-contractual document. Product descriptions may differ from actual products. List of specifications is not comprehensive. The logos and visual identity of the company are the property of Manitou and may not be used without authorisation. All rights reserved. The photos and diagrams contained in this brochure are provided for information only.

MANITOU BF SA - Limited company with board of directors - Share capital: 39,668,399 euros - 857 802 508 RCS Nantes