

# TRIMBLE FIELDLEVEL II SYSTEM FOR WATER MANAGEMENT

LAND LEVELING



LEVEE DESIGN AND INSTALLATION



LAND LEVELING

The Trimble® FieldLevel™ II system provides a complete solution for surveying, designing, and leveling field surfaces to ensure optimal water management. It provides vast improvements in yields, water usage, and farm productivity.



## Survey

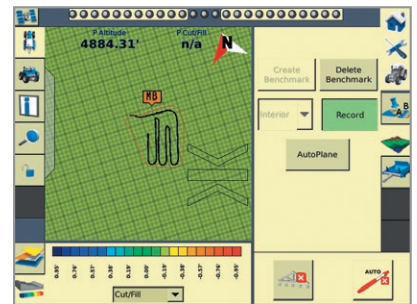
- Map your fields with precision RTK measurements to provide optimal field coverage and ensure the most accurate field surface drainage designs.
- Create boundaries, interior points, and surfaces with ease.
- Calculate and report on the true acreage of your survey area.

## Design

- Create a best-fit surface using Autoplane technology based on your survey, prescribed slopes, and cut and fill balance requirements.
- Define primary and cross slopes for your prescribed orientation and grades, allowing you to easily touch up fields that have previously been leveled.
- Benefit from Multiplane design software for more complex field requirements, and seamlessly transfer data back to your FieldLevel II system.

## Level

- Drive the scraper hydraulic valves automatically to move the optimal amount of dirt across your fields.
- Level your fields using any make and model of tractor and scraper.
- Operate both tandem and dual scraper systems to increase your productivity when leveling your fields.



## LEVEE DESIGN AND INSTALLATION

The Trimble FieldLevel II system offers users two methods of installing rice levees, giving operators the flexibility they desire. Choose from either a complete levee design and guide solution, or the option of guiding your vehicle manually along a contour.

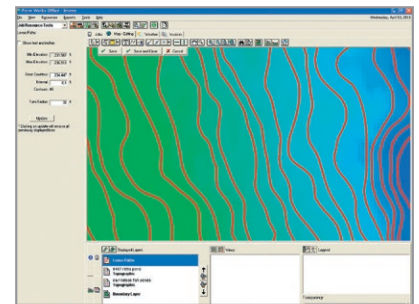


### *Levee*

- Capture 3D topography data using the FieldLevel II Survey and Design module on your FmX® integrated display and import data to Farm Works™ Surface software using the Connected Farm™ or a USB drive.
- Analyze the shape of the field using the 3D viewer, contours, flow arrows, and tributary information.
- Define the start point, vertical intervals, and turn radius capability of the machinery being used; Surface will determine the best levee locations in the field for optimal water use.
- Export the design back to your FmX display using the Connected Farm or a USB drive, and utilize the Trimble Autopilot™ automated steering system to guide the tractor as the levees are installed.

### *Contour*

- Alternatively, use the FieldLevel II system to manually mark levees along the contours of your field instead of using traditional laser methods.
- Define the start point of your levee, and then allow the Trimble lightbar to guide you left or right for marking perfect levees along the contour.
- Decrease the time and difficulty associated with marking a levee by changing the blade step up or down as you move from one contour to another.





## Water Management Solutions from Trimble

Water is one of nature's most precious resources, and one that farmers worldwide must utilize effectively in order to meet the ever-increasing demand for food. The FieldLevel II system is Trimble's most efficient water management system, utilizing GPS signals for topographic surveying, land leveling, and levee design and installation.

As much as seventy percent of the world's fresh water is used for agriculture purposes. Products like the FieldLevel II system, that can minimize water costs and efficiently distribute water by maintaining grade, are critical for water preservation. In addition, Trimble's data collection technologies allow for fast, precise, topographic mapping of any field for use in creating cut and fill maps in the cab.

Your investment in Trimble water management technology can also be leveraged over other agriculture solutions, such as drainage, precision guidance, seeding, flow and application control, and yield monitoring. This cross-functional utility means you get more from your investment.

Trimble has 25 years of experience in the water management business, and our systems are proven to improve yields by 25% and reduce water usage by 30%. Because Trimble knows every dollar—and every drop—counts.

### NORTH & SOUTH AMERICA

#### Trimble Agriculture Division

10368 Westmoor Drive  
Westminster, CO 80021  
USA  
+1-720-887-6100 Phone  
+1-720-887-6101 Fax

#### Trimble Navigation Limited

Corporate Headquarters  
935 Stewart Drive  
Sunnyvale, CA 94085  
USA  
+1-408-481-8000 Phone  
+1-408-481-7740 Fax

### EUROPE

#### Trimble Germany GmbH

Am Prime Parc 11  
65479 Raunheim  
GERMANY  
+49-6142-2100-226 Phone  
+49-6142-2100-140 Fax

### ASIA-PACIFIC

#### Trimble Navigation Australia PTY Limited

Level 1/120 Wickham Street  
Fortitude Valley, QLD 4006  
AUSTRALIA  
+61-7-3216-0044 Phone  
+61-7-3216-0088 Fax