

Farm King

OPERATOR AND PARTS MANUAL

Conventional Auger Mover

Table of Contents

Introduction4

Safety.....5

- Safety5
- General Safety.....5
- Start-up Safety6
- Operation Safety6
- Transport Safety7
- Service and Maintenance Safety7
- Storage Safety.....7

Assembly.....8

- Wheel Drive Installation8
- Mover Axle Assembly.....8
- Mover Frame Assembly9
- Hydraulic Tank and Winch Assembly9
- Hydraulic Pump, Valve and Hose Assembly10
- Belt Guard Assembly10

Operation12

Bolt Torque13

- Checking Bolt Torque13

Parts Drawings.....14

- Conventional Auger Mover14
- Exploded Views of Drive Motors15
- Exploded Views of Winch and Oil Tank.....16
- Exploded View of Hydraulic Pump Mount17
- Parts List18
- Right Drive Wheel Assembly and Parts List.....22
- Motor Stop Assembly and Parts List.....24
- Hydraulic Pump Assembly and Parts List26
- Hydraulic Fittings and Parts List28
- Hydraulic Hoses - Small Mover and Parts List30
- Hydraulic Hoses - Large Mover Parts List32
- Conventional Auger Mover Belt Guards and Parts List34

Shipping Kit and Bundle Numbers36

Warranty.....38

Manufacturer’s statement: for technical reasons Buhler Industries Inc. reserves the right to modify machinery design and specifications provided herein without any preliminary notice. Information provided herein is of descriptive nature. Performance quality may depend on soil fertility, applied agricultural techniques, weather conditions and other factors.

Introduction

The Farm King conventional auger mover is an option that attaches to an auger and allows you to transfer the weight from the intake onto a swivel yoke. This makes moving the auger and positioning it at a bin a much lighter task, which can be done by one person. There are two sizes available. The small mover fits 31', 36', 41', and 46' augers. The large mover fits 51', 56', and 61' augers.

Keep this manual handy for frequent reference. All new operators or owners must review the manual before using the equipment and at least annually thereafter. Contact your Farm King Dealer if you need assistance, information, or additional copies of the manual. Visit our website at www.buhlerindustries.com for a complete list of dealers in your area.

The directions left, right, front and rear, as mentioned throughout this manual, are as seen facing in the direction of travel of the implement.

Safety

Safety Instructions

Remember, YOU are the key to safety. Good safety practices not only protect you, but also the people around you. Make these practices a working part of your safety program. Be certain that everyone operating this equipment is familiar with the recommended operating and maintenance procedures and follows all the safety precautions. Most accidents can be prevented. Do not risk injury or death by ignoring good safety practices.

The alert symbol is used throughout this manual. It indicates attention is required and identifies hazards. Follow the recommended precautions.



The safety alert symbol means...
ATTENTION! BECOME ALERT! YOUR SAFETY IS INVOLVED!



CAUTION

The caution symbol indicates a potentially hazardous situation that, if not avoided, may result in minor or moderate injury. It may also be used to alert against unsafe practices.



WARNING

The Warning Symbol indicates a potentially hazardous situation that, if not avoided, could result in death or serious injury, and includes hazards that are exposed when guards are removed. It may also be used to alert against unsafe practices.



DANGER

The Danger Symbol indicates an imminently hazardous situation that, if not avoided will result in death or serious injury. This signal word is to be limited to the most extreme situations, typically for machine components that, for functional purposes, cannot be guarded.

General Safety Instructions

- Have a first-aid kit available for use and know how to use it.
- Have a fire extinguisher available, stored in a highly visible location, and know how to use it.
- Wear appropriate protective gear. This list may include but is not limited to:
 - hard hat
 - protective shoes with slip resistant soles
 - protective glasses or goggles
 - heavy gloves
 - wet weather gear
 - hearing protection
 - respirator or filter mask
- Read and understand the Operator's Manual and all safety signs before operating, servicing, adjusting, repairing, or unplugging the equipment.
- Do not attempt any unauthorized modifications to your Farm King product as this could affect function or safety, and could affect the life of the equipment.
- Inspect and clean the working area before operating.
- Keep hands, feet, clothing, and hair away from moving parts.
- Ensure bystanders are clear of the area before operating.

Start-Up Safety

- Do not let inexperienced operators or children run this equipment.
- Place all tractor and machine controls in neutral before starting.
- Operate only with ROPS and seatbelt equipped tractors.
- Do not operate inside a building unless there is adequate ventilation.
- Ensure all shields are in place and in good condition before operating.
- Stay clear of PTO shaft and machine when engaging PTO.
- The auger must be on a level surface and wheels free to move when raising or lowering. Everyone should be kept clear during these operations.
- Make certain electric motors are grounded.

Operation Safety

- Do not permit riders.
- Do not wear loose fitting clothing during operation.
- Empty the auger before moving to prevent upending.
- Do not allow anyone other than the operator close to the Auger when in operation.
- Never stand under the auger while raising or lowering.
- When filling tall bins, tanks, or granaries, it is advisable to anchor the auger to the bin or building to prevent it from being tipped over by the wind or a sudden movement.
- Never operate a Conventional Auger with the intake end off the ground.
- Never operate over 540 PTO rpm speed.
- Never raise the intake end of the auger above waist high, as the balance shifts forward, and the auger will tip over.
- Stay away from overhead obstructions and power lines during operation and transporting.
- Electrocutation can occur without direct contact.

Transport Safety

- Review Transport Safety instructions in tractor manual before moving.
- Check with local authorities regarding transport on public roads. Obey all applicable laws and regulations.
- Do not tow equipment that does not have brakes at speeds over 20 mph (32km/h).
- Do not tow equipment that does not have brakes that, when fully loaded, has a mass (weight) over 3300 lb (1.5 t) and more than 1.5 times the mass (weight) of the towing unit.
- Make sure the SMV (Slow Moving Vehicle) emblem and all the lights and reflectors that are required by the local highway and transport authorities are in place, are clean, and can be seen clearly by all overtaking and oncoming traffic.
- Never have the equipment in operation during transport.
- Always transport the Conventional Auger in the down position, carrying the weight of the auger on the winch cable and not on the track stops.
- Take extreme caution in maneuvering on or around tight corners so as not to catch the end of the auger on trees, buildings, power lines, etc.
- The equipment should never be towed without the safety chain securely attached to the auger and the towing vehicle.
- When moving the auger on the road, always use a red flag, or if absolutely necessary to move at night, accessory lights for adequate warning to operators of other vehicles.
- Always travel at a safe speed.
- Inflate transport tires to recommended pressure.

Service and Maintenance

- Stop engine, set brake, remove ignition key, and wait for all moving parts to stop before servicing, adjusting, repairing, or unplugging.
- Support the equipment with blocks or safety stands before working beneath it.
- Follow good shop practices including:
 - keep service area clean and dry
 - be sure electrical outlets and tools are properly grounded
 - use adequate light for the job.
- Use only tools, jacks, and hoists of sufficient capacity for the job.
- Replace and secure all shields removed during servicing before operating.
- Use heavy leather gloves to handle sharp objects.
- Failure to follow proper procedures when mounting a tire on a wheel or rim can produce an explosion, which may result in serious injury or death.

Storage Safety

- Store the unit in an area away from human activity.
- Do not permit children to play on or around the stored machine.
- Support the frame on stands and blocks to provide a secure base.
- When storing an Auger, park it on level ground so that the bottom end will never be over its center of gravity.
- Block the wheels of the Auger so that it will not move and tear the jack from it's mount.
- When storing the auger, the intake end should be tied or weighted to prevent tipping.

Assembly Instructions

Wheel Drive Installation

1. Jack up one end of the auger axle (#24) and remove the wheel and tire assembly.
2. Take one of the wheel drive gears (#84) and place it into the inside of the rim with the gear facing out. Use a straight edge placed at several positions across the tire to line up the gear.
3. With the gear lined up, fasten it to the rim using four 5/16" x 1/2" socket set screws. These must be tightened in several stages switching from side to side so the gear stays in position. These must be securely tightened to prevent the gear from popping out under load. Bolt the rim back onto the auger.
4. Now take the drive assembly with the hydraulic motor and slide it onto the axle. The assemblies are left and right. The handle should face the outside of the axle and the drive gear should be facing down. The hydraulic ports on the motor should face up. It is VERY IMPORTANT the motor gear is parallel with the wheel drive gear and that both gears contact along their full length.
5. Tack the hydraulic motor arm (#66) on the drive assembly to the axle. Double check for alignment and weld solid.
6. Insert two 7/8" MORB x 9/16" MJIC 90° elbows (#7 hydraulic fittings) into the motor ports. Tighten so ends face center of the axle.
7. Repeat on the other wheel.
8. If the motor gear is not engaged far enough into the wheel drive gear, the bottom of the handle is slotted for adjustment.

Mover Axle Assembly

1. Be sure to install the grease nipples in the tubes at both ends of the axle assembly before mounting the tires. Insert the left hand (#11) and the right hand (#12) hub and spindle assemblies through the tubes at the ends of the axle, check to see that they are turned as shown in the drawing.
2. The right hand spindle has a coupler (#14) pushed onto the shaft protruding through the sleeve. It is held in place by a 3/8" x 3/4" set screw and jam nut in the shaft groove.
3. Take the valve mount and steering handle weldment and insert it onto the shaft of the left hand spindle using a 1/4" x 2" key. Hold in place with a set screw and jam nut in the shaft groove.
4. Mount the wheels and tires on the spindle hubs using the nuts supplied with the hubs. Bolt the steering tube (#5) to the lever on the right hand spindle (#12) using a 1/2" x 1-1/2" bolt and lock nut. The other end of the tube has a threaded adjustment rod. Adjust the threaded rod until the wheels are parallel. Do not over tighten lock nuts because parts must turn freely.

Mover Frame Assembly

1. Slide the left and right adjustment tubes (#6 & #7) into the two outer tubes (#3). The connecting hole you use will vary with the length of the auger. For the small mover use the tubes fully extended on 46' augers and fully collapsed on 31' augers. Sizes between these lengths will use a hole between these two positions. For the large mover use the tubes fully extended on 61' augers and fully collapsed on 51' augers. Turn adjustment tubes so brace bracket is on the inside. The inner and outer tubes are joined by a hose guide weldment (#16) with a 1/2" bolt on the left hand side. A 1/2" x 3-1/2" bolt, lock washer and hex nut is used on the right hand side. Two additional hose guides with a 3/8" bolt (#17) are spaced along the left adjustment tube (#6).
2. Bolt the ends of the tube assemblies between the brackets welded to the side of the mover axle assembly (#1) using 1/2" x 3-1/2" bolts, lock washers and hex nuts. The two cross braces (#48) join the two tube assemblies. One end bolts to the axle and the other end to the welded bracket on the tube. Join where they cross. Use 1/2" x 1-1/4" bolts, lock washers and hex nuts at all five locations.
3. Loosely assemble the mover clamp plates (#47) and the support clamp weldments(#10) on the main auger axle using 1/2" x 3/4" bolts, lock washers and hex nuts. Space them so they are centered on the axle and about the same distance apart as the ends of the tube assemblies. The welded tube on the support clamp weldment is turned down and faces the inside of the auger. The ends of the axle tubes bolt to the outsides of the clamp tubes using a 3/4" x 4" bolt and lock nut. Tighten so this connection can still move freely. Verify that the two clamp assemblies are accurately centered and then tighten bolts.
4. Connect the two hydraulic cylinders (#8) to the mover axle (#1) using the lower lift pin (#46). The cylinders are turned with the ports facing in. The ends of the cylinders and a cylinder spacer weldment (#9) are fitted on the pin between two welded brackets on the mover axle. The lift arm weldment (#2) slides onto the ends of the cylinders and is held on by two 1/2" x 2-1/2" bolts, lock washers and hex nuts. The tube clamp weldment (#13) connects to the end of the lift arm with the upper lift pin (#45). Both pins are held in place by 1/4" x 1-1/2" cotter pins (#60).
5. Before bolting the clamp to the tube, extend the hydraulic cylinders about 1-1/2". This will make the tires for the mover lift when the cylinder is fully compressed for transport. Bolt the clamp to the tube using 3/8" x 2" bolts, lock washers and hex nuts. Clamp position will be checked when assembly is complete.
6. Connect the transport chain when the mover is lifted up in transport position. Bolt one end to the lift arm (#2) and the other end to the threaded chain tightener. Use 3/8" x 1-1/4" bolts, lock washers and hex nuts. Use the clevis and the threaded rod to adjust to the correct length when in transport position. DO NOT forget to remove this chain before using the mover.

Hydraulic Tank and Winch Assembly

1. The hydraulic oil tank bolts to the right hand undercarriage arm just above the motor mount. Turn tank so filler cap faces up. Position so the 3/4" hose will be long enough to reach from the end of the tank to the hydraulic pump behind the gas motor. Fit the two tank strap weldments into the grooves on the tank and bolt on the two stands (#33 & #34). One stand (#34) has extra holes for mounting the oil filter. These holes face the outside of the auger. Use 3/8" lock washers and hex nuts. Bolt the stands to the undercarriage arm using two 4-1/2" long clamp plates (#67) and 3/8" x 4-1/2" bolts, lock washers and hex nuts.

2. The winch bracket (#70) should be in place on the auger before starting. The rest of the winch drive assembly can be assembled before bolting to the winch bracket. Remove the long bolt from the top corner of the winch and replace it after sliding it through the welded sleeve on the winch adaptor weldment (#23). Bolt the manifold (#19) to the hydraulic motor (#18) using four 5/16" x 2" socket head bolts. Join the winch shaft using a 3/16" sq. x 1" key and the hydraulic motor using a woodruff key in the motor with the chain coupler. Tighten set screws in coupler when in place. Bolt the winch adaptor weldment to the hydraulic motor using two 3/8" x 3/4" bolts and lock washers. The winch guard weldment (#22) bolts to the edge of the winch with a 1/4" x 3/4" bolt, lock washer and hex nut and to the motor with a 3/8" x 3/4" bolt and lock washer. To tighten the bolts on the chain coupler cover, first tighten one side and then turn the winch one half turn with a wrench to tighten the other side. Bolt this assembly to the winch bracket and attach the cable.

Hydraulic Pump, Valve and Hose Assembly

1. Bolt the motor stop to the side of the motor mount. Slide on the stop tube with the set screw first (#133 & #132). Then slide on the stop weldment (#130). A 1/4" x 11/4" bolt and hex nut at the end stop them from sliding off. Bolt the pump assembly (#122) to the side of the gas motor using slots in the connector bar (#116).
2. Bolt the control valve (#42) to the top of the steering handle (#4) using 5/16" x 2-3/4" bolts, lock washers and hex nuts. The cover with the decal for control directions can be added after fittings and hoses are in place. The correct fittings are shown on the drawing labeled hydraulic fittings. Note that one of the ports has a ball valve. This valve acts as a safety mechanism so the winch cannot be accidentally activated. The winch has a pressure relief valve so the hoses must be connected to the correct ports. Check hydraulic system drawing to verify.
3. Install the rest of the fittings as shown on the hydraulic fittings drawing. The base for the oil filter holder will require 3/4" to 1/2" reducer bushings that are not shown on this drawing.
4. There are two separate drawings showing the hose connections for the small and the large mover. About half the hoses are equal lengths on both sizes of movers. Run the long hoses through the hose guides on the mover tubing. On some shorter sizes you will have to roll up excess length of hose. Use cable ties to fasten any hoses that hang down to the axle or mover tubing.

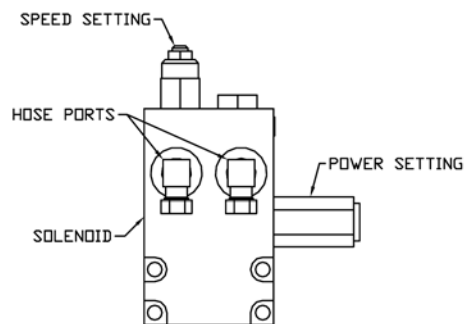
Belt Guard Assembly

1. Mount the 12" guard (#2) to the auger. Bolt the belt guard adjustment plate (#7) to the inside edge of the guard using 3/8" x 3/4" bolt, lock washers and hex nuts. This plate should line up with the top and bottom of the guard. The two holes 4-7/8" apart face out with the four holes facing down.
2. Bolt the triangle welded to the top guard weldment (#1) to the adjustment plate. Pick holes that line up best with the belt. Use 3/8" x 1" bolts, lock washers and hex nuts. Bolt the bottom belt guard weldment (#4) to one of the four holes on the adjustment plate using the welded sleeve on the guard with a 3/8" x 4" bolt, lock washer and hex nut. Choose the hole that lines up best with the belt.

3. Join the two guard plates using the 7" adjustment plate (#6). Use 3/8" x 4-1/2" bolts, lock washers and hex nuts fitted through the welded sleeves on the guard plates. The small belt guard (#9) is held on with the same bolts.
4. Bolt the guard support arm to the welded bolt on one of the clamps using a 3/8" flat washer and lock nut. This location must swivel freely. Bolt clamps to the undercarriage arm so the guard support arm fits behind the adjustment plate (#7). Use 3/8" x 1-1/2" bolts, lock washers and hex nuts. Bolt arm to one of the holes at the back of the plate. Which hole is used will vary based upon the motor size. Use 3/8" x 1-1/2" bolt with a 1/4" thick washer between the arm and the plate. Use a 3/8" flat washer and lock nut on the outside.
5. The two belt guard covers (#10) are fitted over the weldments and held in place by two pins and clips on each guard.

Operation Instructions

1. Once your fittings are tight you can fill your reservoir with hydraulic oil. Any hydraulic oil will work.
2. Tighten down your winch cable and make sure there are three full wraps around the drum before tension is added.
3. The relief valve bolted to the winch hydraulic motor should be adjusted before using, if required. The power is adjusted on the control screw on the side of the solenoid valve. The factory setting is 3 turns out. There should be just enough power to lift the empty intake auger off the ground. Remove the plug and adjust with an Allen wrench if required. The winch speed is adjusted with a control screw on the end of the solenoid valve. The factory setting is 3-1/2 turns out. If speed adjustment is required, loosen the hex nut on the threaded shaft and adjust with an Allen wrench as required. Lock the setting in place with the hex nut.



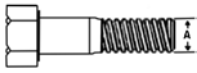



MD-20

4. Grease the sleeves on the wheel spindles.
5. Make sure all bolts are tight and pins are secure.
6. Check the air pressure in the tires.
7. Check engine oil.
8. Start the engine at a low rpm and then activate the control valve. If the direction of movement is not the same as shown on the valve cover decal, invert the hoses on that spool.
9. The wheel speed can be adjusted on the divider block at the center of the axle. Loosen nut and adjust with an Allen wrench.
10. Check all hydraulic fittings for leaks.
11. Lift cylinders slowly up and down to check for any binding in the hoses.
12. Always use safety chain when transporting. Do not forget to remove when using conventional auger mover.

Bolt Torque

Checking Bolt Torque

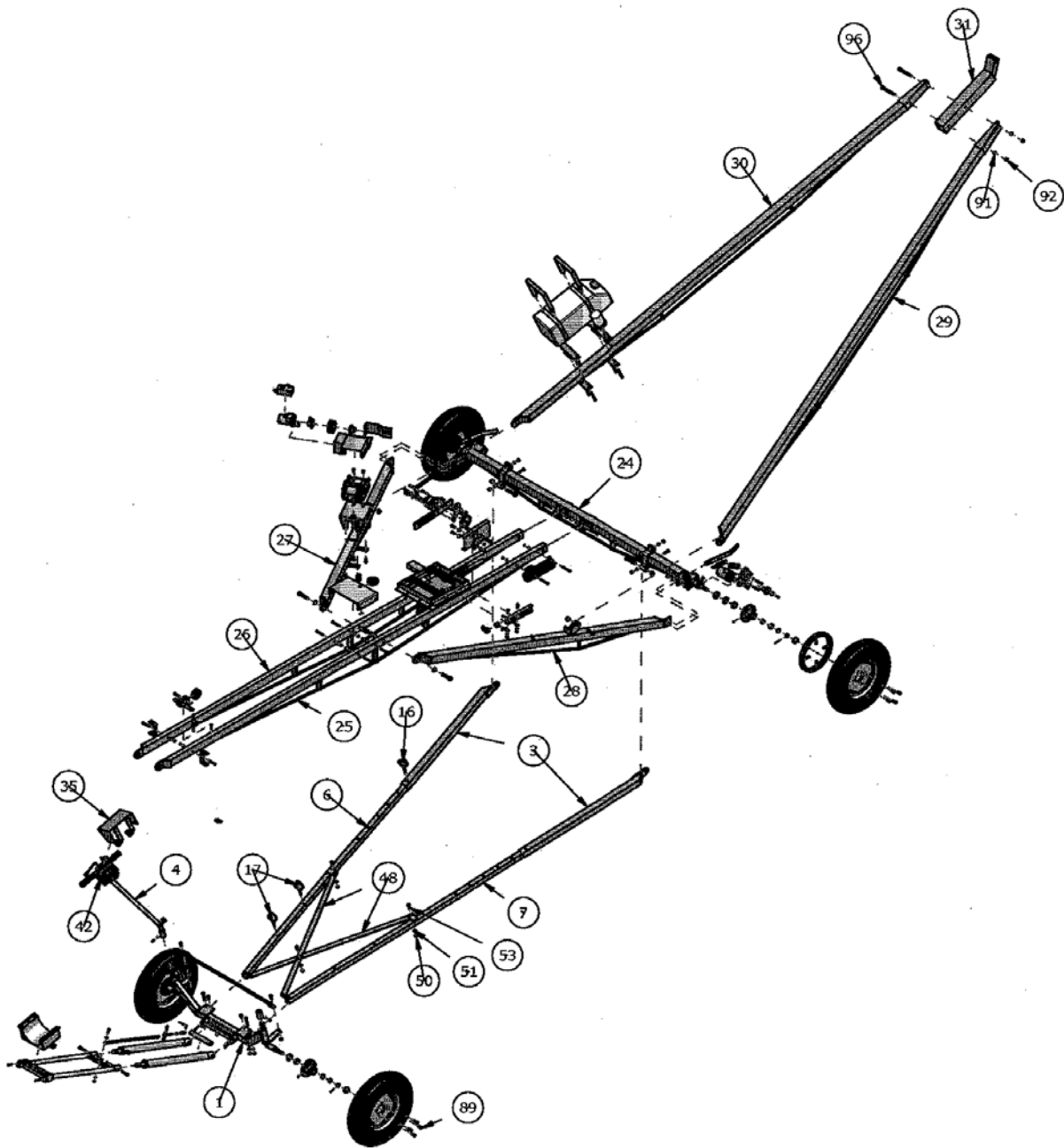
The tables shown below give correct torque values for various bolts and hex bolts. Tighten all bolts to the torques specified in chart unless otherwise noted. Check tightness of bolts periodically, using bolt torque chart as a guide. Replace hardware with the same strength bolt.

Bolt Torque*						
						
Bolt Diameter	Grade 2 Bolts		Grade 5 Bolts		Grade 8 Bolts	
(inches)	SAE 2		SAE 5		SAE 8	
"A"	(lb-ft)	(N.m)	(lb-ft)	(N.m)	(lb-ft)	(N.m)
0.25 (1/4)	6	8	9	12	12	17
0.313 (5/16)	10	13	19	25	27	36
0.375 (3/8)	20	27	33	45	45	63
0.438 (7/16)	30	42	53	72	75	100
0.5 (1/2)	45	61	80	110	115	155
0.563 (9/16)	70	95	115	155	165	220
0.625 (5/8)	95	128	160	215	220	305
.75 (3/4)	165	225	290	390	400	540
0.875 (7/8)	170	230	420	570	650	880
1	225	345	630	850	970	1320

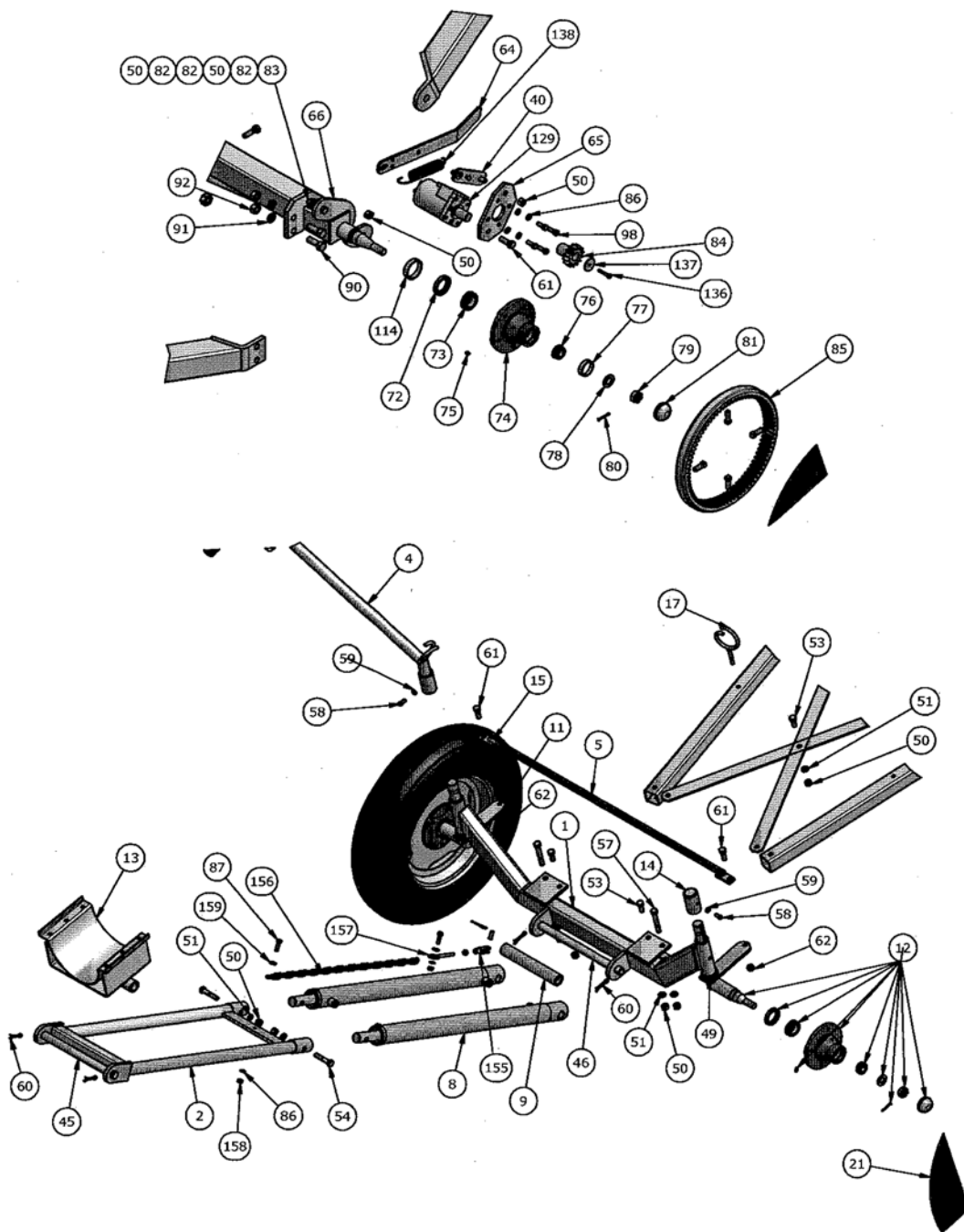
Torque figures indicated above are valid for non-greased or non-oiled threads and heads unless otherwise specified. Therefore, do not grease or oil bolts or hex bolts unless otherwise specified in this manual. When using locking elements, increase torque values by 5%.

*Torque value for bolts and hex bolts are identified by their head markings.

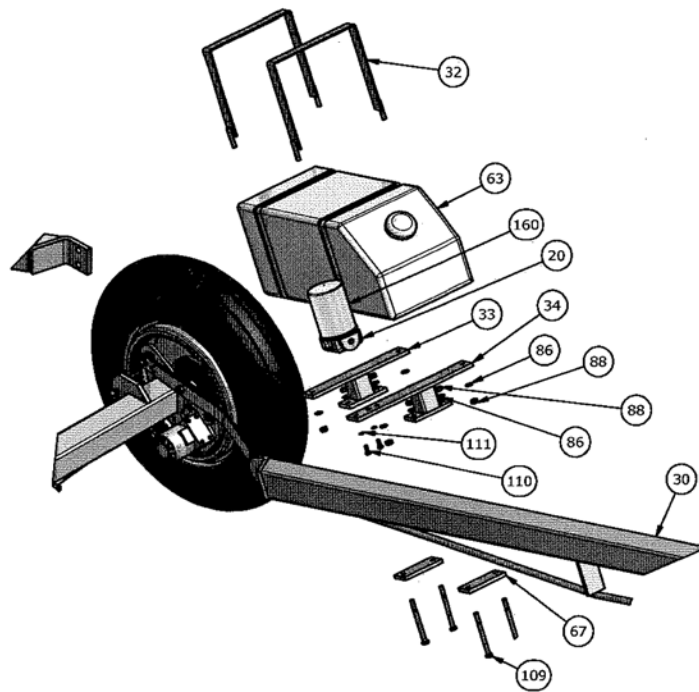
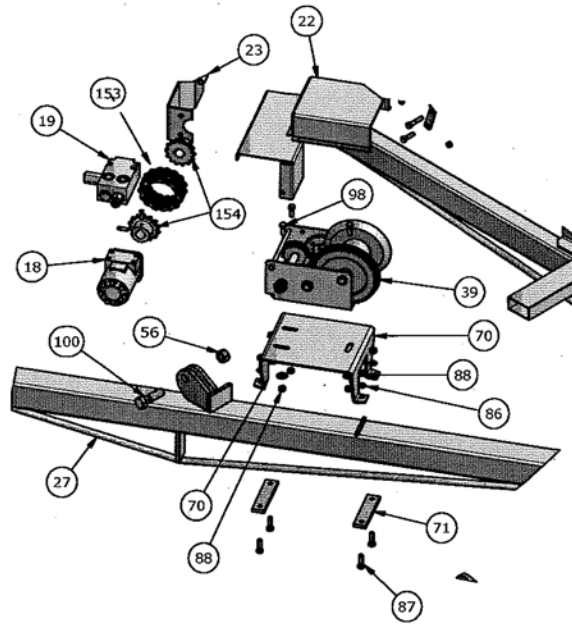
Conventional Auger Mover



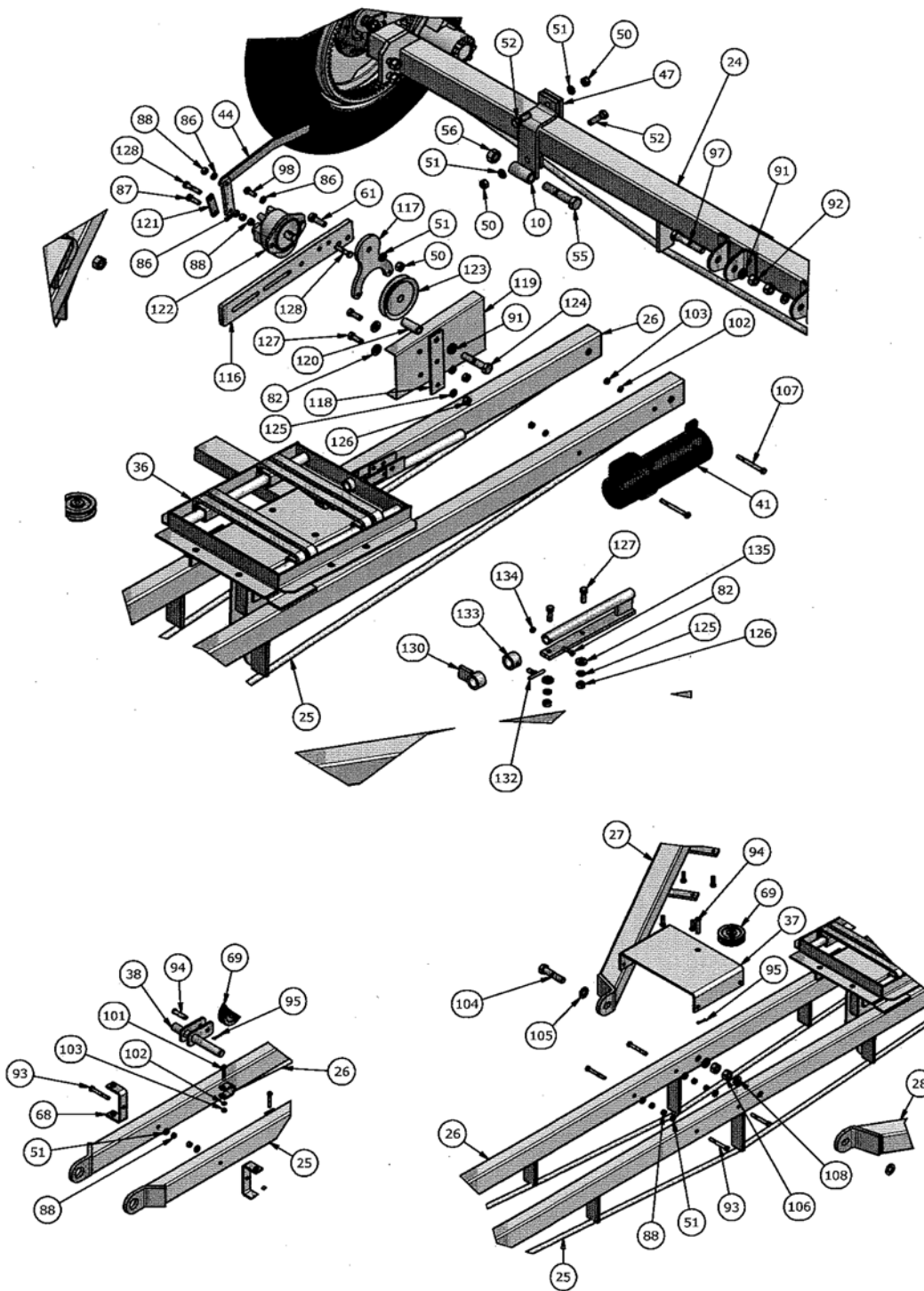
Exploded Views of Drive Motors



Exploded Views of Winch and Oil Tank



Exploded View of Hydraulic Pump Mount



When Ordering Parts

Always give your dealer the Model, Color and Serial Number of your machine to assist him in ordering and obtaining the correct parts. Use the exploded view and tabular listing of the area of interest to exactly identify the required part.

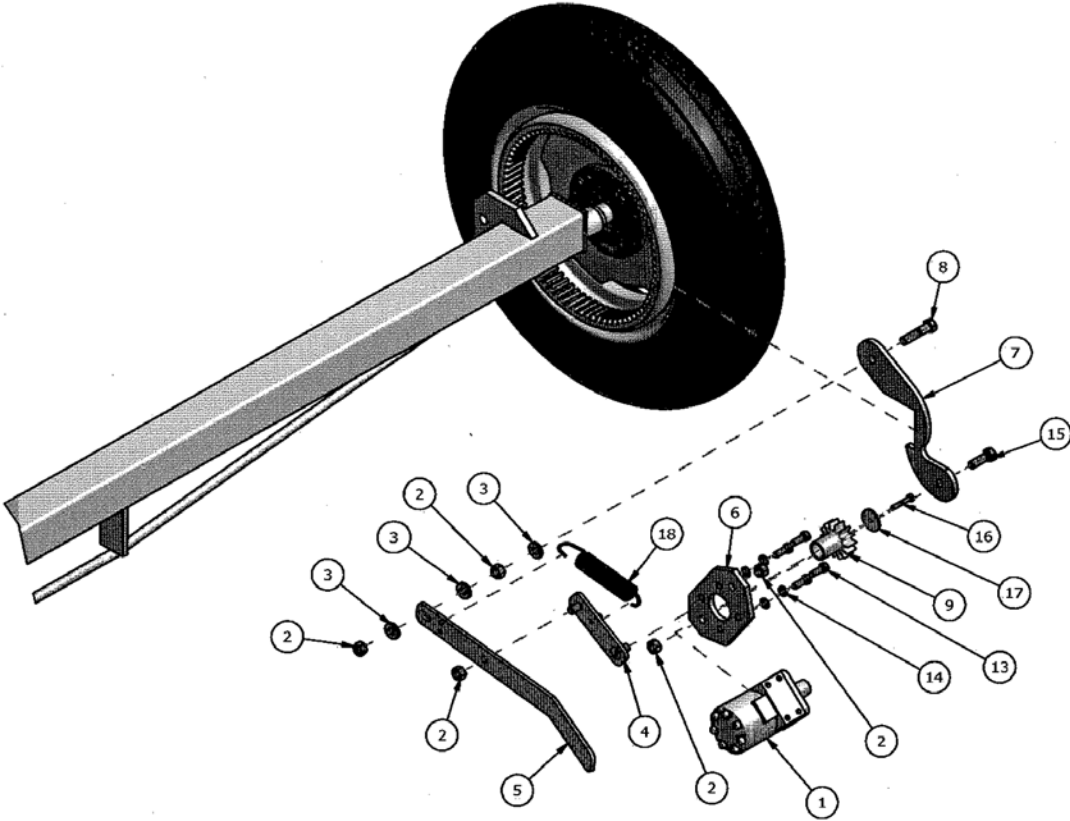
Item	Part Number	Description	Qty
1	910160	Axle Weldt (Lg Mvr)	1
	910106	Axle Weldt (Sm Mvr)	1
2	910161	Lift Arm Weldt (Lg Mvr)	1
	910107	Lift Arm Weldt (Sm Mvr)	1
3	910162	Undercarriage Adjment Tube Weldt (Lg Mvr)	2
	910108	Undercarriage Adjment Tube Weldt (Sm Mvr)	2
4	910163	Vle Mt & Steering Handle Weldt (Lg Mvr)	1
	910116	Vle Mt & Steering Handle Weldt (Sm Mvr)	1
5	910164	Advable Tube Weldt (Lg Mvr)	1
	910141	Advable Tube Weldt (Sm Mvr)	1
6	910165	Adjment Tube Weldt - L (Lg Mvr)	1
	910142	Adjment Tube Weldt - L (Sm Mvr)	1
7	910166	Adjment Tube Weldt - R (Lg Mvr)	1
	910143	Adjment Tube Weldt - R (Sm Mvr)	1
8	25480	Aug Cyl Assy (Lg Mvr)	2
	25481	Aug Cyl Assy (Sm Mvr)	2
9	910091	Cyl Spacer Weldt	1
10	910140	Support Clamp Weldment	2
11	910257	Hub & Stub Axle Assy - L (Lg Mvr)	1
	910215	Steer Weldt - L (Sm Mvr)	1
12	910261	Hub & Stub Axle Assy - R (Lg Mvr)	1
	910144	Steer Weldt - R (Sm Mvr)	1
13	910195	10" Mvr Clp Weldt	1
14	910117	Coupler Weldment	1
15	910115	Adjustment Rod Weldt	1
16	910238	Hose Guide Weldt (1/2" Bolt)	1
17	910239	Hose Guide Weldt (3/8" Bolt)	2
18	971518	Hyd Motor 101-1018	1
19	909169	Manifold	1
20	910202	10 Micron Oil Filter	1
21	F253	Tire Mounted 6.70	2
22	910139	Hydraulic Winch Guard Weldment	1
23	910134	Hydraulic Winch Adaptor Weldment	1
24	962039	Axle Weldt	1
25	F0718	Undercarr Weldt - L	1
26	F8851	Undercarr Weldt - R	1

Item	Part Number	Description	Qty
27	903416	X Tube Weldt - R	1
28	962035	X Tube Weldt - L	1
29	F8852	Lift Arm Weldt - L	1
30	F8853	Lift Arm Weldt - R	1
31	962043	Lift Arm Ext Weldt	1
32	910267	Tank Strap Weldt	2
33	910272	Tank MT Weldt	1
34	910273	Tank & Oil Filter MT Weldt	1
35	910198	Ctrl Display Weldt	1
36	908010	Mot MT Weld	1
37	962060	Idler Mtg PI Weldt	1
38	961333	Swvl Pulley Hldr Weldt	1
39	961945	K2550 Winch	1
40	910131	Motor Connector Weldment	2
41	909277	Manual Holder 3-1/2" x 12"	1
42	910275	Valve Control Decal	1
43	961375	Hnger Weldt	1
44	910130	Pump Handle Weldment	1
45	910100	Upper Lift Pin	1
46	910101	Lower Lift Pin	1
47	910075	Mover Clamp Plate	2
48	910152	1/4" x 1-3/4" x 60" x Brace	2
49	910214	Tapered Bearing T126	2
50	81636	1/2" Hex Nut (PI)	25
51	81637	1/2" Lock Washer (PI)	22
52	87553	1/2" x 1-3/4" Hex Bolt (PI)	4
53	81620	1/2" x 1-1/4" Hex Bolt (PI)	5
54	811796	1/2" x 2-1/2" Hex Bolt (PI)	2
55	84336	3/4" x 4" Hex Bolt (PI)	2
56	812365	3/4" Locknut (PI)	4
57	81629	1/2" x 3-1/2" Hex Bolt (PI)	2
58	812037	3/8" x 3/4" Sqhd cup Setscrew (PI)	2
59	986045	3/8" Jam Nut (PI)	2
60	9812434	1/4" x 1-1/2" Cotter Pin (PI)	6
61	84277	1/2" x 1-1/2" Hex Bolt (PI)	5
62	812364	1/2" Lock Nut (PI)	2
63	910203	10" x 10" x 25" Hyd Oil Tank	1
65	910120	3/8" x 4" x 6-3/4" Hyd Mot Mt (PI)	2
66	910119	Hyd Mot Arm	2
67	910271	3/8" x 2" x 4-1/2" Tank Mt PI	2
68	903392	1/4" x 1-1/4" x 9-1/8" Clev Hldr	2

Item	Part Number	Description	Qty
69	961846	1/2" ID x 3-1/2" Od x 1-1/8" Cble Pulley	2
70	903413	8-1/4" x 19-1/2" Wnch Brkt	1
71	903414	3/8" x 1-1/4" x 5-1/4" Conn PI	2
72	968430	Oil Seal Se14x	2
73	967208	Inner Bearing Cone (967208) (LM48548)	2
74	968403	5-Bolt Hub w/ Bearing Cups	2
75	967900	1/4" Grease Fitting	2
76	968406	Outer Bearing Cone (LM11949)	2
77	968405	Bearing Cup (LM11910)	2
78	9812416	3/4" Sae Flat Washer (Br)	2
79	81834	3/4" Slotted Hex Nut	2
80	9812486	1/8" x 1-1/2" Cotter Pin (Br)	2
81	968409	Dust Cap	2
82	81638	1/2" Bs Flat Washer (PI)	10
83	81624	1/2" x 2-1/4" Hex Bolt (PI)	2
84	910204	Cast Pinion Gear	2
85	910196	Ring Gear Cast w/ Setscrews	2
86	81593	3/8" Lock Washer (PI)	25
87	86171	3/8" x 1-1/4" Hex Bolt (PI)	7
88	81592	3/8" Hex Nut (PI)	24
89	968404	1/2" x 1-1/4" Wheel Bolt (PI) Included w/ Hub	18
90	84270	5/8" x 1-3/4 Hex Bolt (PI)	4
91	81677	5/8" Lock Washer (PI)	9
92	81676	5/8" Hex Nut (PI)	8
93	81583	3/8" x 3" Hex Bolt (PI)	6
94	961010	1/2" x 2-1/8" Clev Pin	2
95	9812430	1/8" x 1" Cotter Pin (PI)	2
96	81674	5/8" x 5-1/2" Hex Bolt (PI)	2
97	81669	5/8" x 3-1/2" Hex Bolt (PI)	2
98	86170	3/8" x 1" Hex Bolt (PI)	12
99	84000	3/8" Flat Washer (PI)	3
100	84346	3/4" x 2-1/2" Hex Bolt (PI)	2
101	810640	5/16" x 2" Hex Bolt (PI)	2
102	81569	5/16" Lock Washer (PI)	4
103	81568	5/16" Hex Nut (PI)	4
104	810149	3/4" x 3-1/2" Hex Bolt (PI)	2
105	81702	3/4" Bs Flat Washer (PI)	2
106	81700	3/4" Hex Nut (PI)	2
107	812744	5/16" x 3-1/2" Hex Bolt (PI)	2
108	81701	3/4" Lock Washer (PI)	2

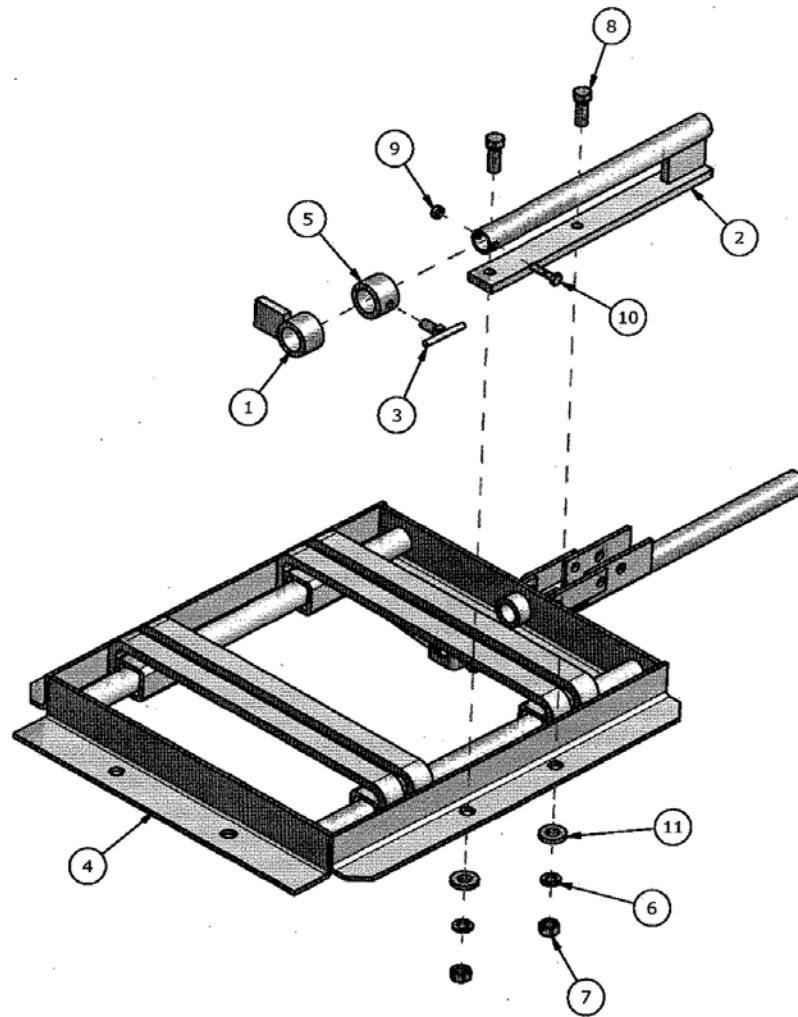
Item	Part Number	Description	Qty
109	81588	3/8" x 4-1/2" Hex Bolt (PI)	2
110	81525	1/4" x 3/4" Hex Bolt (PI)	2
111	81545	1/4" Lock Washer (PI)	2
112	904590	1/4" x 4-1/4" x 5" Hngr Mtg Brkt	1
113	961377	1" x 10-1/2" Hngr Swvl Shft	1
114	968412	Inner Cup (LM48510)	2
115	84111	1/2" x 1-1/4" Sq Hd Set Screw (PI)	4
116	910126	Hydraulic Pump to Motor Connector	1
117	910213	Hyd Pump Arm	1
118	910128	Pump Belt Guard Mount Plate	1
119	910129	Pump Belt Guard	1
120	910127	Pump Belt Guard Spacer	1
121	910123	Pump Belt Tensioner Link Plate	1
122	910200	26004-Lzd Hyd Pump	1
123	910199	Sgl Grv 4-1/2" Sheave c/w Hub	1
124	84289	5/8" x 3" Hex Bolt (PI)	1
125	81615	7/16" Lock Washer (PI)	4
126	81514	7/16" x 1-1/4" Hex Bolt (PI)	4
127	81598	7/16" x 1-3/4" Hex Bolt (PI)	2
128	81578	3/8" x 1-3/4" Hex Bolt (PI)	2
129	910245	Hyd Motor 101-1011-009	2
130	910179	Stopper Weldt	1
131	910180	Mot Stop Frame Weldt	1
132	910181	Setscrew Weldt	1
133	910175	1.017" Id x 1-1/2" Od x 1" Mot Stop Adjable Pipe	1
134	81544	1/4" Hex Nut (PI)	1
135	81528	1/4" x 1-1/4" Hex Bolt (PI)	1
136	811631	1/4" x 1-1/2" Hex Bolt Gr5 (PI)	2
137	Washer	1/4" Flat Wash (PI)	2
138		Spring	2
153		Double Chain	1
154		Chain Gear w/ Setscrews	2
155	905043	Clevis Yoke w/ Pin & Cot Pin	1
156	910240	Axle Hldr Chain	1
157	903590	Chain Tghtnr Rod Weldt	1
158	812363	3/8" Lock Nut (PI)	3
159	81570	5/16" Fl Wash (PI)	2
160	910212	Oil Filter Head	1

Right Drive Wheel Assembly



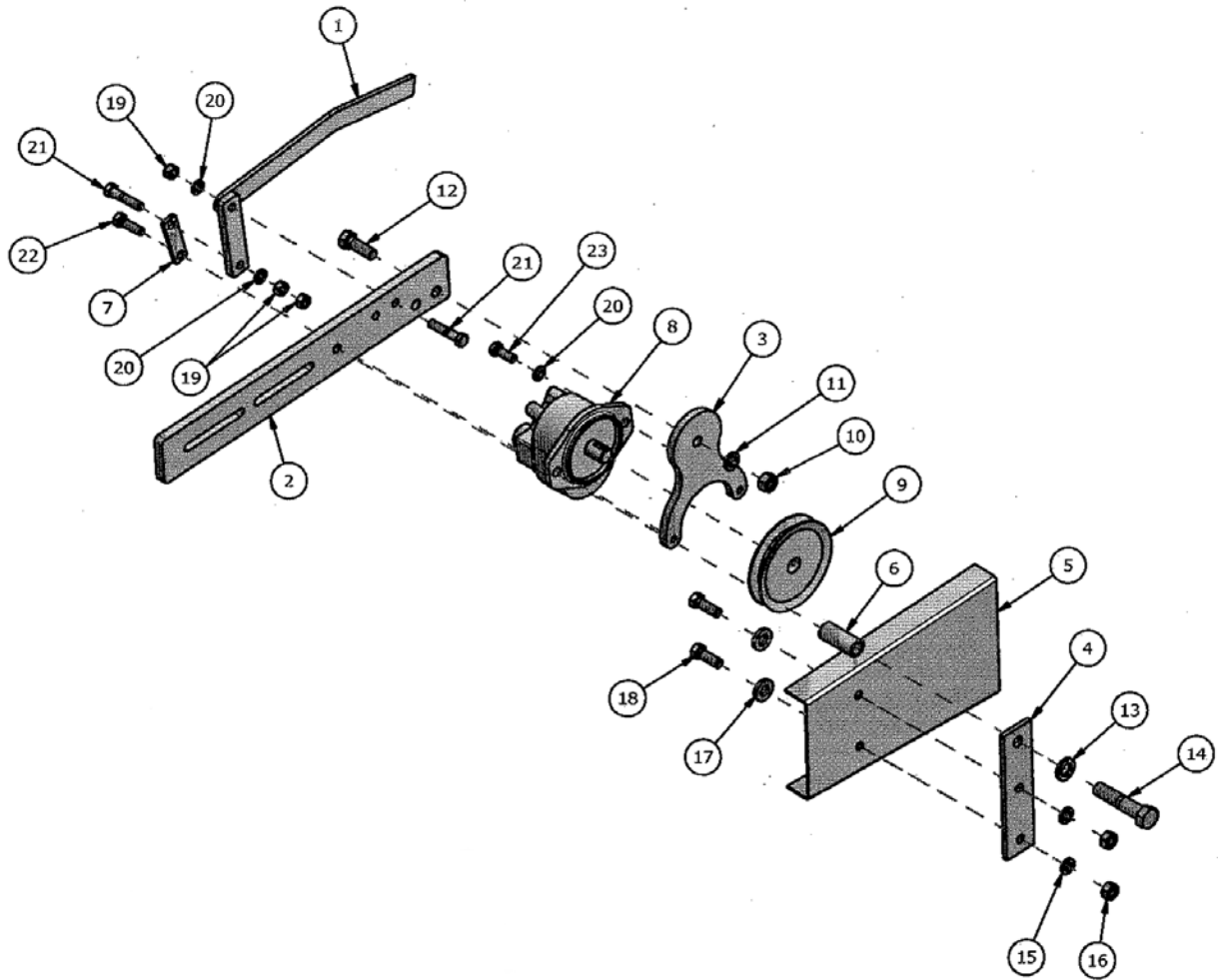
Item	Part Number	Description	Qty
1	910245	Hyd Motor 101-1011-009	2
2	81636	1/2" Hex Nut (PI)	10
3	81638	1/2" Bs Flat Washer (PI)	6
4	910131	Motor Connector Weldment	2
5	910121	Motor Handle	2
6	910120	3/8" x 4" x 6-3/4" Hyd Mot Mt (PI)	2
7	910119	Hyd Mot Arm	2
8	81624	1/2" x 2-1/4" Hex Bolt	2
9	910204	Cast Pinion Gear	2
10	84270	5/8" x 1-3/4" Hex Bolt (PI)	1
11	81677	5/8" Lock Washer (PI)	1
12	81676	5/8" Hex Nut (PI)	1
13	86170	3/8" x 1" Hex Bolt (PI)	8
14	81593	3/8" Lock Washer (PI)	8
15	84277	1/2" x 1-1/2" Hex Bolt (PI)	2
16	811631	1/4" x 1-1/2" Hex Bolt Gr5 (PI)	2
17	Washer	1/4" Flat Wash (PI)	2
18		Spring	2

Motor Stop Assembly



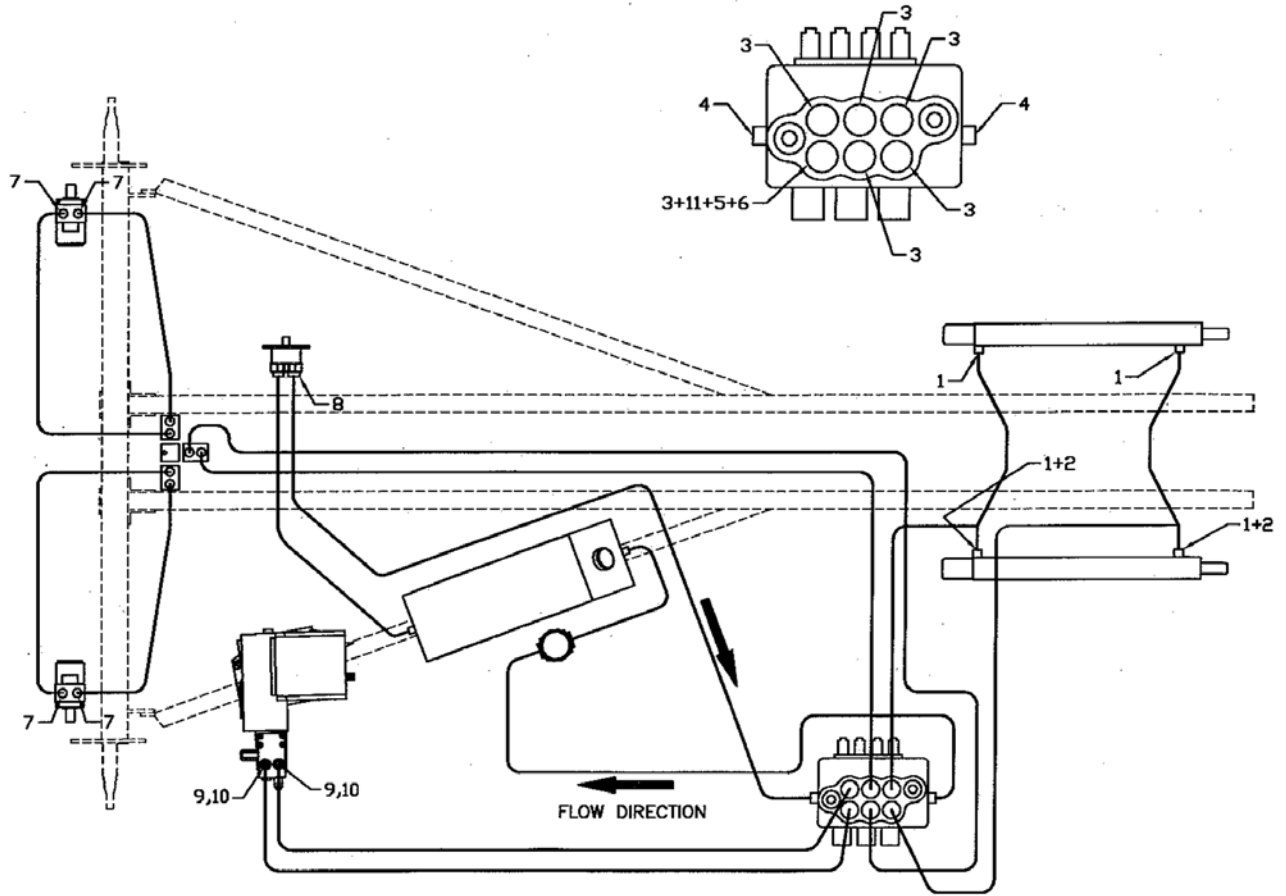
Item	Part Number	Description	Qty
1	910179	Stopper Weldt	1
2	910180	Mot Stop Frame Weldt	1
3	910181	Setscrew Weldt	1
4	908010	Mot Mt Weldt	1
5	910175	1.017" ID x 1-1/2" Od x 1" Mot Stop Adjable Pipe	1
6	81615	7/16" Lock Washer (PI)	2
7	81614	7/16" Hex Nut (PI)	2
8	81598	7/16" x 1-1/4" Hex Bolt (PI)	2
9	81544	1/4" Hex Nut (PI)	1
10	81528	1/4" x 1-1/4" Hex Bolt (PI)	1
11	81638	1/2" Bs Flat Washer (PI)	2

Hydraulic Pump Assembly



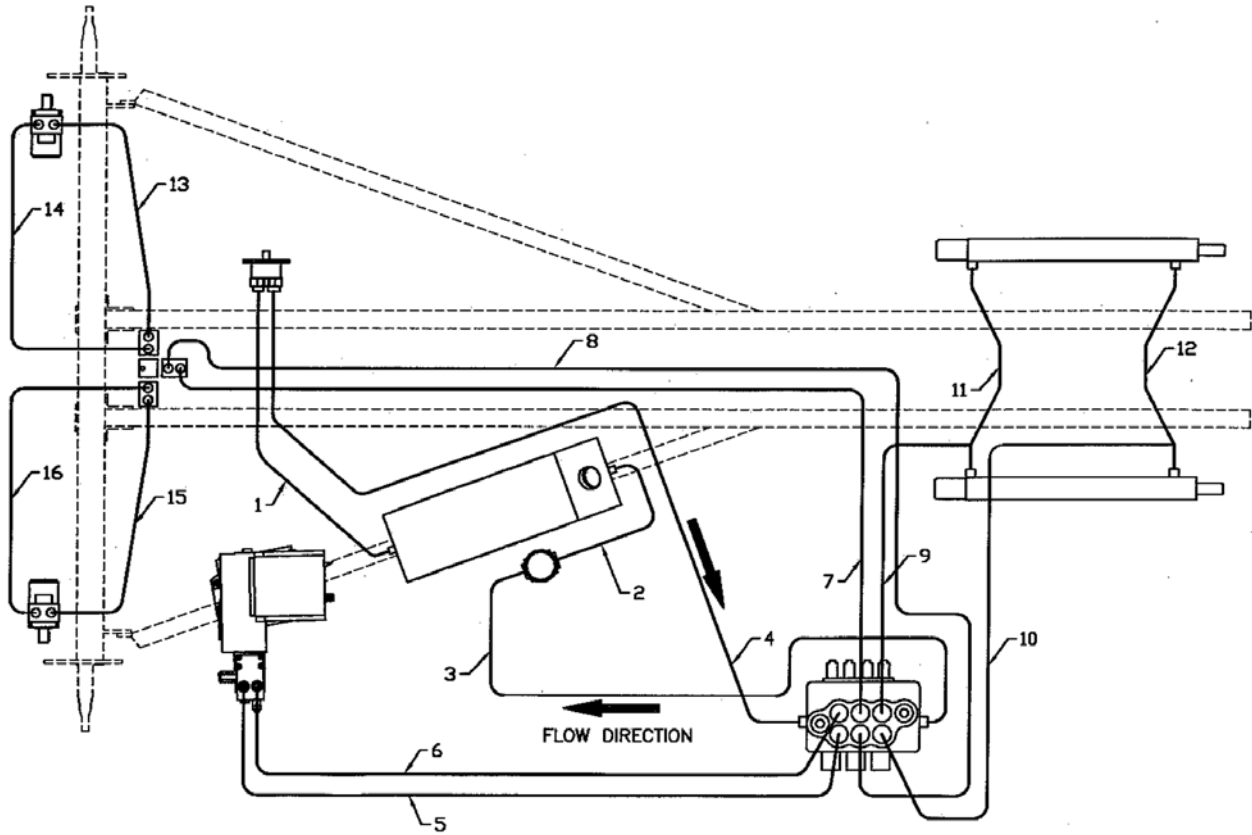
Item	Part Number	Description	Qty
1	910130	Pump Handle Weldment	1
2	910126	Hydraulic Pump to Motor Connector	1
3	910213	Hyd Pump Arm	1
4	910128	Pump Belt Guard Mount Plate	1
5	910129	Pump Belt Guard	1
6	910127	Pump Belt Guard Spacer	1
7	910123	Pump Belt Tensioner Link Plate	1
8	910200	26004-Lzd Hyd Pump	1
9	910199	Sgl Grv 4-1/2" Sheave c/w Hub	1
10	81636	1/2" Hex Nut	1
11	81637	1/2" Lock Washer (PI)	1
12	84277	1/2" x 1-1/2" Hex Bolt (PI)	1
13	81677	5/8" Lock Washer	1
14	84289	5/8" x 3" Hex Bolt (PI)	1
15	81615	7/16" Lock Washer (PI)	2
16	81614	7/16" Hex Nut (PI)	2
17	81638	1/2" Bs Flat Washer (PI)	2
18	81598	7/16" x 1-1/4" Hex Bolt (PI)	2
19	81592	3/8" Hex Nut (PI)	3
20	81593	3/8" Lock Washer (PI)	3
21	81578	3/8" x 1-3/4" Hex Bolt (PI)	2
22	86171	3/8" x 1-1/4" Hex Bolt (PI)	1
23	86170	3/8" x 1" Hex Bolt (PI)	1

Hydraulic Fittings



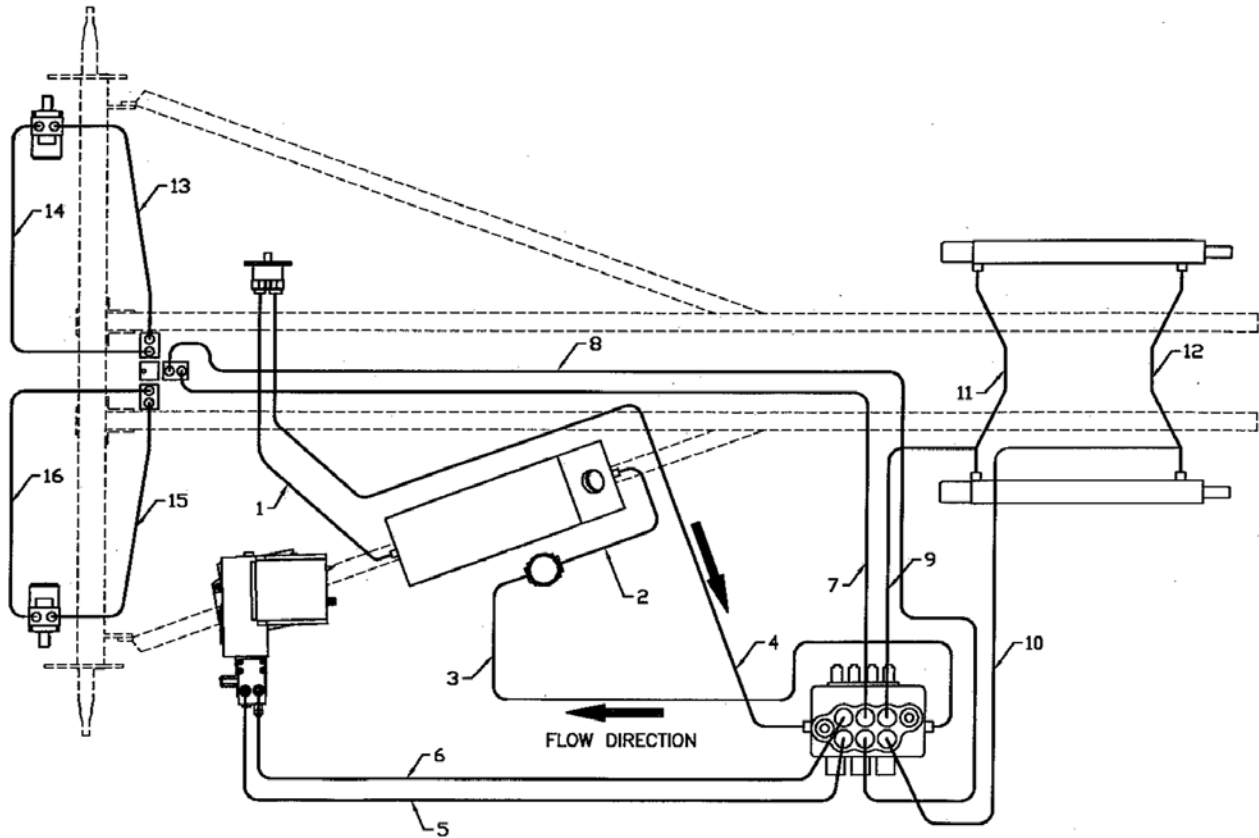
Item	Part Number	Description
1	910262	9/16" Morb x 9/16" Mjic 90° Elbow w/ Restrictor
2	887572	9/16" Fjic x 9/16" Mjic x 9/16" Mjic Tee
3	812304	9/16" Morb x 9/16" Mjic 45° Elbow
4	811414	3/4" Morb x 3/4" Mjic 90° Elbow
5	910247	3/8" Steel Ball Valve 200 Wog
6	812084	3/8" Mnpt x 9/16" Mjic Adaptor Straight
7	812457	7/8" Morb x 9/16" Mjic 90° Elbow
8	886897	7/8" Morb x 3/4" Mjic Adaptor Straight
9	905392	3/4" Morb x 3/4" Forb 90° Elbow
10	812079	3/4" Morb x 1/2" Swfnpt Adaptor Straight
11	910249	9/16" Fjic x 3/8" Mnpt Adaptor Straight

Hydraulic Hoses - Small Mover



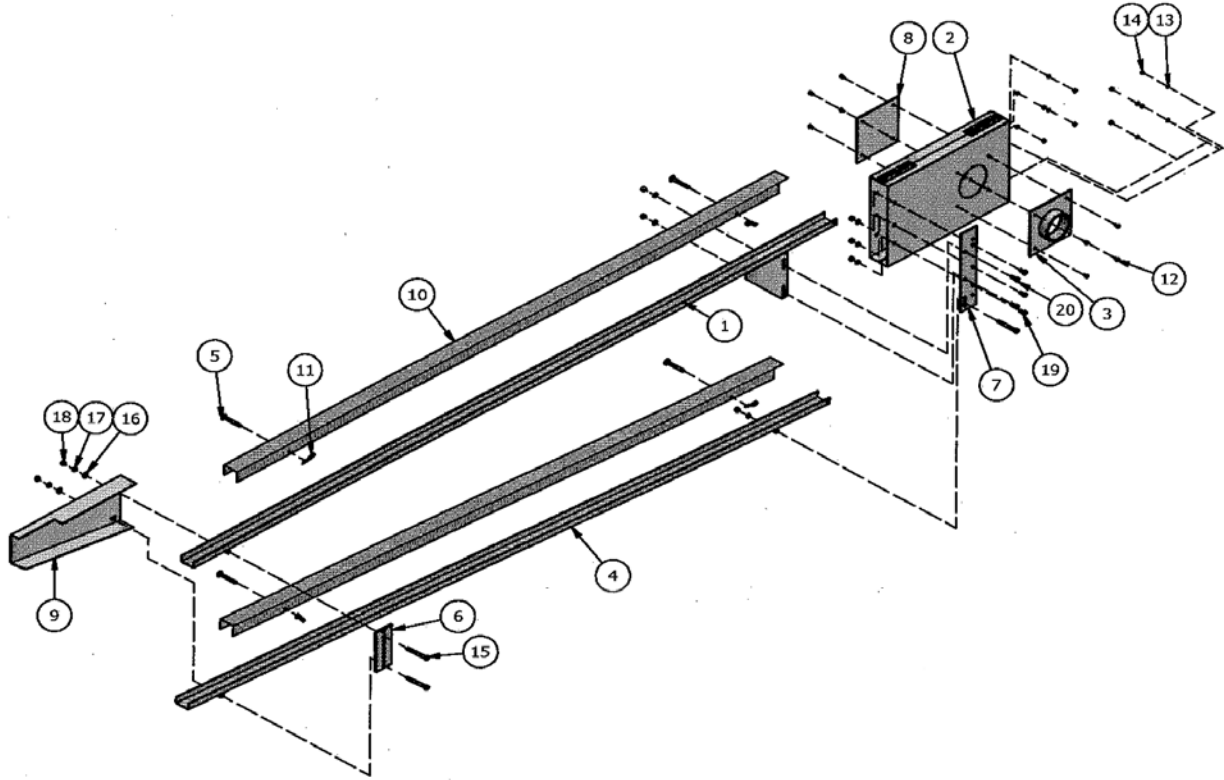
Item	Part Number	Description
1	910250	3/4" x 60" Hose 1.3" Morb x 3/4" Swmnpt
2	910251	3/4" x 24" Hose 3/4" Swmnpt x 1/2" Mnpt
3	910260	1/2" x 198" Hose 1/2 Mnpt x 3/4 Swfjic
4	910205	1/2" x 192" Hose 3/4 Swfjic x 3/4 Swfjic
5	910206	3/8" x 192" Hose 9/16 Swfjic x 1/2 Swmnpt
6	910206	3/8" x 192" Hose 9/16 Swfjic x 1/2 Swmnpt
7	910207	3/8" x 186" Hose 9/16 Swfjic x 9/16 Morb
8	910207	3/8" x 186" Hose 9/16 Swfjic x 9/16 Morb
9	910208	3/8" x 60" Hose 9/16 Swfjic x 9/16 Swfjic
10	910258	3/8" x 78" Hose 9/16 Swfjic x 9/16 Swfjic
11	910209	3/8" x 18" Hose 9/16 Swfjic x 9/16 Swfjic
12	910209	3/8" x 18" Hose 9/16 Swfjic x 9/16 Swfjic
13	910210	3/8" x 60" Hose 9/16 Morb x 9/16 Swfjic
14	910210	3/8" x 60" Hose 9/16 Morb x 9/16 Swfjic
15	910211	3/8" x 48" Hose 9/16 Morb x 9/16 Swfjic
16	910211	3/8" x 48" Hose 9/16 Morb x 9/16 Swfjic

Hydraulic Hoses - Large Mover



Item	Part Number	Description
1	910252	3/4" x 72" Hose 1.3" Morb x 3/4" Swmnpt
2	910251	3/4" x 24" Hose 3/4" Swmnpt x 1/2" Mnpt
3	910253	1/2" x 288" Hose 1/2 Mnpt x 3/4 Swfjic
4	910254	1/2" x 342" Hose 3/4 Swfjic x 3/4 Swfjic
5	910255	3/8" x 258" Hose 9/16 Swfjic x 1/2 Swmnpt
6	910255	3/8" x 258" Hose 9/16 Swfjic x 1/2 Swmnpt
7	910256	3/8" x 336" Hose 9/16 Swfjic x 9/16 Morb
8	910256	3/8" x 336" Hose 9/16 Swfjic x 9/16 Morb
9	910208	3/8" x 60" Hose 9/16 Swfjic x 9/16 Swfjic
10	910258	3/8" x 78" Hose 9/16 Swfjic x 9/16 Swfjic
11	910209	3/8" x 18" Hose 9/16 Swfjic x 9/16 Swfjic
12	910209	3/8" x 18" Hose 9/16 Swfjic x 9/16 Swfjic
13	910210	3/8" x 60" Hose 9/16 Morb x 9/16 Swfjic
14	910210	3/8" x 60" Hose 9/16 Morb x 9/16 Swfjic
15	910211	3/8" x 48" Hose 9/16 Morb x 9/16 Swfjic
16	910211	3/8" x 48" Hose 9/16 Morb x 9/16 Swfjic

Conventional Auger Mover Belt Guards



Item	Part Number	Description	Qty
1	910305	Top Belt Guard Weldment	1
2	961369	12" Guard Weldment	1
3	961357	Guard Plate Weldment	1
4	910307	Bottom Belt Guard Weldment	1
5	910310	Belt Guard Cover Pin Weldment	4
6	910037	Belt Guard Adjustment Plate 0.25 x 3 x 7"	1
7	910041	Belt Guard Adjustment Plate 7Ga x 3 x 14"	1
8	961358	Guard Mounting Plate 10Ga x 8 x 8"	1
9	910308	Belt Guard Plate 12Ga x 13.5 x 19"	1
10	910303	Belt Guard 20Ga x 6 x 105.75"	2
11	12780	#7 Hair Pin Clip	4
12	81523	1/4" x 1/2" Hex Bolt (PI)	8
13	81545	1/4" Lock Washer (PI)	8
14	81544	1/4" Hex Nut (PI)	8
15	81585	3/8" x 3-1/2" Hex Bolt (PI)	3
16	81570	5/16" FI Washer (PI)	2
17	81593	3/8" Lock Washer (PI)	8
18	81592	3/8" Hex Nut (PI)	8
19	84072	3/8" x 3/4" Hex Bolt (PI)	3
20	86170	3/8" x 1" Hex Bolt (PI)	2

Shipping Kit and Bundle Numbers

The following is a list of Kit Numbers for this product and the Bundle Numbers, Descriptions, and Quantities for each Kit.

Bundle Number	Description
C501	Conventional Auger Mover 7" x 46' & Under
C502	Conventional Auger Mover 8" x 46' & Under
C503	Conventional Auger Mover 8" x 51' & Over
C504	Conventional Auger Mover 10" x 46' & Under
C505	Conventional Auger Mover 10" x 51' & Over
C506	Conventional Auger Mover 13" x 46' & Under

Farm King Limited Warranty

This document limits your warranty rights.

Base Limited Warranty

Buhler Industries Inc. provides this warranty only to original retail purchasers of its product. Buhler Industries Inc. warrants to such purchasers that all Buhler Industries Inc. manufactured parts and components used and serviced as provided for in the Operator's Manual shall be free from defects in materials and workmanship for a period following delivery to the original retail purchaser of 12 months (80 days for commercial applications). This limited warranty applies only to those parts and components manufactured by Buhler Industries Inc. Parts and components manufactured by others are subject to their manufacturer's warranties, if any.

Buhler Industries Inc. will fulfill this limited warranty by, at its option, repairing or replacing any covered part that is defective or is the result of improper workmanship, provided that the part is returned to Buhler Industries Inc. within thirty (30) days of the date that such defect or improper workmanship is, or should have been, discovered. Buhler Industries Inc. reserves the right to either inspect the product at the buyer's location or have it returned to the factory for inspection. Parts must be returned through the selling representative and the buyer must prepay transportation charges.

Buhler Industries Inc. will not be responsible for repairs or replacements that are necessitated, in whole or part, by the use of parts not manufactured by or obtained from Buhler Industries Inc. Under no circumstances are component parts warranted against normal wear and tear. There is no warranty on product pump seals, product pump bearings, rubber product hoses, pressure gauges, or other components that require replacement as part of normal maintenance. Also: Buckets and Bucket Tines carry no warranty, Bent Spears carry no warranty, Snowblower Fan Shafts carry no warranty, Mower Blades carry no warranty, Portable Auger Parts Have Two (2) Year Warranty, Loader Parts Have Two (2) Year Warranty. The purchaser is solely responsible for determining suitability of goods sold. This warranty is expressly in lieu of all other warranties expressed or implied. Buhler Industries Inc. will in no event be liable for any incidental or consequential damages whatsoever. Nor for any sum in excess of the price received for the goods for which liability is claimed.

Repair Parts Limited Warranty

Buhler Industries Inc. warrants Farm King replacement parts purchased after the expiration of the Buhler Industries Inc. Limited Warranty, and used and serviced as provided for in the Operator's Manual, to be free from defects in materials or workmanship for a period of thirty (30) days from the invoice date for the parts. Buhler Industries Inc. will fulfill this limited warranty by, at its option, repairing or replacing any covered part that is defective or is the result of improper workmanship, provided that the part is returned to Buhler Industries Inc. within thirty (30) days of the date that such defect or improper workmanship is, or should have been, discovered. Such parts must be shipped to Buhler Industries Inc. at the purchaser's expense.

What is Not Covered

Under no circumstances does this limited warranty cover any components or parts that have been subject to the following: negligence; alteration or modification not approved by Buhler Industries Inc.; misuse; improper storage; lack of reasonable and proper maintenance, service, or repair; normal wear; damage from failure to follow operating instructions; accident; and/or repairs that have been made with parts other than those manufactured, supplied, and or authorized by Buhler Industries Inc.

Authorized Dealer and Labor Costs

Repairs eligible for labor under this limited warranty must be made by Buhler Industries Inc. or an authorized Farm King dealer. Buhler Industries Inc. retains the exclusive discretion to determine whether it will pay labor costs for warranty repairs or replacements, and the amount of such costs that it will pay and the time in which the repairs will be made. If Buhler Industries Inc. determines that it will pay labor costs for warranty work, it will do so by issuing a credit to the dealer's or distributor's account. Buhler Industries Inc. will not approve or pay invoices sent for repairs that Buhler Industries Inc. has not previously approved. Warranty service does not extend the original term of this limited warranty.

Warranty Requirements

To be covered by warranty, each Farm King new product must be registered with Buhler Industries Inc. within thirty (30) days of delivery to original retail purchaser. If the customer decides to purchase replacement components before the warranty disposition of such components is determined, Buhler Industries Inc. will bill the customer for such components and then credit the replacement invoice for those components later determined to be covered by this limited warranty. Any such replacement components that are determined not be covered by this limited warranty will be subject to the terms of the invoice and shall be paid for by the purchaser.

Warranty Claims:

Warranty requests must be prepared on Buhler Industries Inc. Warranty Claim Forms with all requested information properly completed. Warranty Claims must be submitted within a thirty (30) day period from date of failure repair.

Warranty Labor:

Any labor subject to warranty must be authorized by Buhler Industries Inc. The labor rate for replacing defective parts, where applicable, will be credited at 100% of the dealer's posted shop rate.

Exclusive Effect of Warranty and Limitation of Liability

TO THE EXTENT PERMITTED BY LAW, BUHLER INDUSTRIES INC. DISCLAIMS ANY WARRANTIES, REPRESENTATIONS, OR PROMISES, EXPRESS OR IMPLIED, AS TO THE QUALITY, PERFORMANCE, OR FREEDOM FROM DEFECT OF THE COMPONENTS AND PARTS COVERED BY THIS WARRANTY AND NOT SPECIFICALLY PROVIDED FOR HEREIN.

TO THE EXTENT PERMITTED BY LAW, BUHLER INDUSTRIES INC. DISCLAIMS ANY IMPLIED WARRANTIES OF MERCHANTABILITY AND FITNESS FOR A PARTICULAR PURPOSE ON ITS PRODUCTS COVERED HEREIN, AND DISCLAIMS ANY RELIANCE BY THE PURCHASER ON BUHLER INDUSTRIES INC.'S SKILL OR JUDGMENT TO SELECT OR FURNISH GOODS FOR ANY PARTICULAR PURPOSE. THE PURCHASER'S ONLY AND EXCLUSIVE REMEDIES IN CONNECTION WITH THE BREACH OR PERFORMANCE OF ANY WARRANTY ON PRODUCTS MANUFACTURED BY BUHLER INDUSTRIES INC. ARE THOSE SET FORTH HEREIN. IN NO EVENT SHALL BUHLER INDUSTRIES INC. BE LIABLE FOR INCIDENTAL OR CONSEQUENTIAL DAMAGES (INCLUDING, BY WAY OF EXAMPLE ONLY AND NOT LIMITATION, LOSS OF CROPS, LOSS OF PROFITS OR REVENUE, OTHER COMMERCIAL LOSSES, INCONVENIENCE, OR COST OF REPLACEMENT OF RENTAL EQUIPMENT). IN NO EVENT SHALL FARM KING'S CONTRACT OR WARRANTY LIABILITY EXCEED THE PURCHASE PRICE OF THE PRODUCT.

(Note that some provinces or states do not allow limitations on how long an implied warranty lasts or the exclusion or limitation of incidental or consequential damages, so the above limitations and exclusion may not apply to you.) This warranty gives you specific legal rights and you may also have other rights, which vary from province to province or state to state.

Buhler Industries Inc. neither assumes nor authorizes any person or entity, including its selling representatives, to assume any other obligations or liability in connections with the sale of covered equipment, or to make any other warranties, representations, or promises, express or implied, as to the quality, performance, or freedom from defect of the components and parts covered herein. No one is authorized to alter, modify, or enlarge this limited warranty, or its exclusions, limitations and reservations.

Corrections of defects and improper workmanship in the manner, and for the applicable time periods, provided for herein shall constitute fulfillment of all responsibilities of Buhler Industries Inc. to the purchaser, and Buhler Industries Inc. shall not be liable in negligence, contract, or on any other basis with respect to the subject equipment.

This limited warranty is subject to any existing conditions of supply which may directly affect Buhler Industries Inc.'s ability to obtain materials or manufacture replacement parts.

Buhler Industries Inc. reserves the right to make improvements in design or changes in specifications to its products at anytime, without incurring any obligation to owners of units previously sold.

Government Legislation:

Warranty terms and conditions are subject to provincial or state legislation.

Important Note: This warranty does not apply to rentals.

www.farm-king.com

Farm King

301 Mountain Street South
Morden, Manitoba Canada R6M 1X7
Ph.: 204.822.4467 | Fax: 204.822.6348
Toll Free: 888.524.1004
E-mail: info@buhler.com
www.farm-king.com

Equipment shown is subject to change without notice.
©2012 Buhler Trading Inc. Printed in USA. TSX:BUI

bühler | a division of Buhler Industries Inc.