



High-Speed Compact Discs
OPTIMER SERIES



HIGH-SPEED TILLAGE SOLUTIONS

KUHN OFFERS A RANGE OF HIGH-SPEED COMPACT DISCS DESIGNED TO INCREASE YOUR PRODUCTIVITY. HIGHER OPERATING FIELD SPEED CAN NOW BE ACHIEVED WITHOUT SACRIFICING SEEDBED QUALITY OR MACHINE PERFORMANCE.



CUSTOMIZED TO FIT YOUR OPERATION
 Mounted and trailed configurations, along with many different roller options, allow you to customize your Optimizer to meet your tillage needs.

OPTIMER L VS. OPTIMER XL
 The Optimizer L, with 20" (510 mm) discs, works best with shallower tillage and lighter residue. The Optimizer XL, with larger 24" (620 mm) discs, is more favorable for deeper work and greater amounts of tough residue.

Summary

Optimizer L/XL Series Shared Features.....4-7

Optimizer L 8

Optimizer XL 9

Optional Equipment..... 10

Specifications 11

Models	Working Width	Disc Diameter	No. of Blades
OPTIMER L 300	9'10" (3.0 m)	20" (510 mm)	24
OPTIMER L 350	11'6" (3.5 m)	20" (510 mm)	28
OPTIMER L 400	13'1" (4.0 m)	20" (510 mm)	32
OPTIMER L 4000	13'1" (4.0 m)	20" (510 mm)	32
OPTIMER L 5000	16'5" (5.0 m)	20" (510 mm)	40
OPTIMER L 6000	19'8" (6.0 m)	20" (510 mm)	48
OPTIMER L 7500	24'7" (7.5 m)	20" (510 mm)	60
OPTIMER XL 300	9'10" (3.0 m)	24.4" (620 mm)	24
OPTIMER XL 350	11'6" (3.5 m)	24.4" (620 mm)	28
OPTIMER XL 400	13'1" (4.0 m)	24.4" (620 mm)	32
OPTIMER XL 4000	13'1" (4.0 m)	24.4" (620 mm)	32
OPTIMER XL 5000	16'5" (5.0 m)	24.4" (620 mm)	40
OPTIMER XL 6000	19'8" (6.0 m)	24.4" (620 mm)	48
OPTIMER XL 7500	23'10" (7.3 m)	24.4" (620 mm)	58

HIGH-SPEED COMPACT DISCS OPTIMER L/XL SERIES



OPTIMIZE YOUR TILLAGE

The Optimizer L and Optimizer XL are separate models that share many similarities, but feature different sized disc blades to best suit your tillage needs. Both the mounted (100) and trailed (1000) versions of the Optimizer Series are built on a strong frame with generous clearance underneath that allows soil and residue to pass through unhindered.



MOUNTED VERSION

Mounted versions use a rigid frame integrated with the headstock.



TRAILED VERSION

Trailed versions have a large "backbone" that forms the main structure between the hitch and transport carriage. The discs and roller mount to folding wing subframes that in turn mount to the main structure.



T-LINER ROLLER

All Optimizer L and XL 100 Series mounted models come standard with the T-Liner roller. The T-Liner measures 23.6" (600 mm) in diameter and works best in medium to heavy soils. The scrapers help keep the roller clean in sticky conditions, while the solid tube design reduce the chances of rocks becoming jammed in the roller.



SINGLE TUBE ROLLER

This optional roller features round bars arranged in a spiral pattern around the central axis, with an overall outside diameter of 21.7" (550 mm). It is lightweight for easy tractor lifting and performs best when crumbling and finishing light to medium soils without rocks.



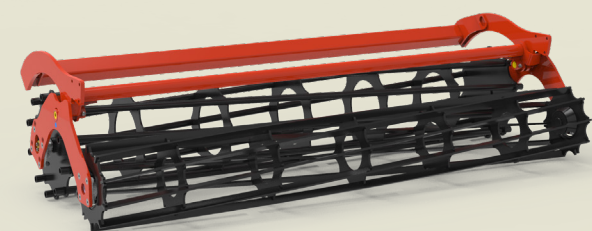
FLEXLINER ROLLER

The Flexliner roller is offered as an option on the Optimizer L and XL 100 Series models. Steel strips are attached to the central bar and can flex and spring as they roll along the soil surface. With a 21" (540 mm) overall diameter, this design works well for spring seedbed preparation.



DOUBLE U ROLLER

The Double U roller is offered on the Optimizer L and XL 1000 Series models and is perhaps the most versatile roller in the lineup. It features two rows of wheels mounted in a staggered pattern, all of which measure 23.6" (600 mm) in diameter. This design helps the soil to flow through the roller and also helps the roller to self-clean. The Double U roller works with all soil types, including heavy and sticky soils, and offers good leveling ability.



DOUBLE TUBE/BAR ROLLER

The Double Tube/Bar roller is offered as an option all Optimizer models. The front (tube) roller consists of round bars arranged in a spiral pattern around the central axis with a diameter of 21.7" (550 mm), while the rear (bar) roller consists of flat bars arranged in a spiral pattern with a diameter of 16.5" (420 mm). This roller offers excellent stability as well as crumbling and leveling in medium to heavy soils.



SIDE DEFLECTOR

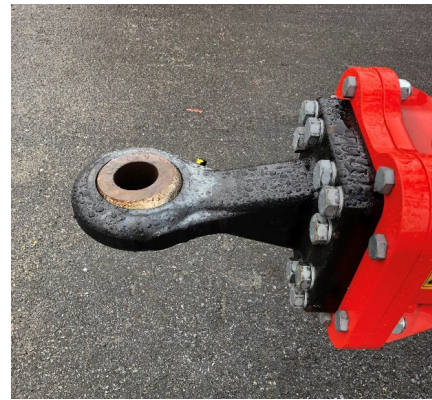
The side deflector discs catch soil and residue thrown from the disc blades and deflect it downward into the path of the roller, reducing the formation of ridges and promoting an even, level field finish. Each deflector adjusts in three directions: length, depth, and distance from the center of the machine, allowing you to fine-tune the field finish depending on conditions.



HYDRAULIC DEPTH CONTROL

Connected to a tractor SCV, the cylinders raise or lower the rear roller to obtain the desired working depth. Hydraulic control allows you to remain in the comfort of the cab and make quick adjustments as needed.

*Standard on all Optimer L & Optimer XL 1000 models.
Optional on Optimer XL 100 models.*



HITCH CONFIGURATION

All Optimer 100 (mounted) models are compatible with Cat. 2, 3N, and 3 hitches. Optimer 1000 (trailed) models offer a choice of Cat. 3 or 4, two-point or drawbar hitches to match your preferences.



DISC BLADES

Optimer blades are nearly 1/4" (6 mm) thick for greater durability and a longer wear life. Each blade mounts to its own arm at a compound angle to create a high-quality cutting and mixing action.



DISC BLADE SUSPENSION ARM

The individual suspension arms mean that only individual discs are affected in the event of an obstacle strike, rather than the entire gang. The suspension arms bolt to sealed bearings that are lubed-for-life with high-quality synthetic grease, reducing time spent maintaining the machine.



ELASTOMER BLOCKS

The suspension arm for each disc blade mounts to the frame with four polyurethane elastomer blocks. These blocks firmly hold the arms in place, yet have some "give" that allows the arm and disc blade to flex up and out of the way when an obstacle is struck in the field.

EXCEPTIONAL SEEDBED PREPARATION

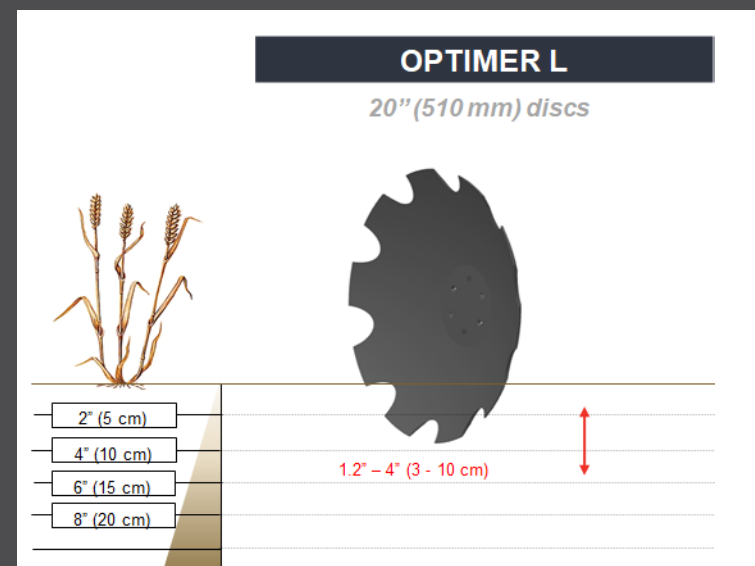


OUTSTANDING RESIDUE HANDLING



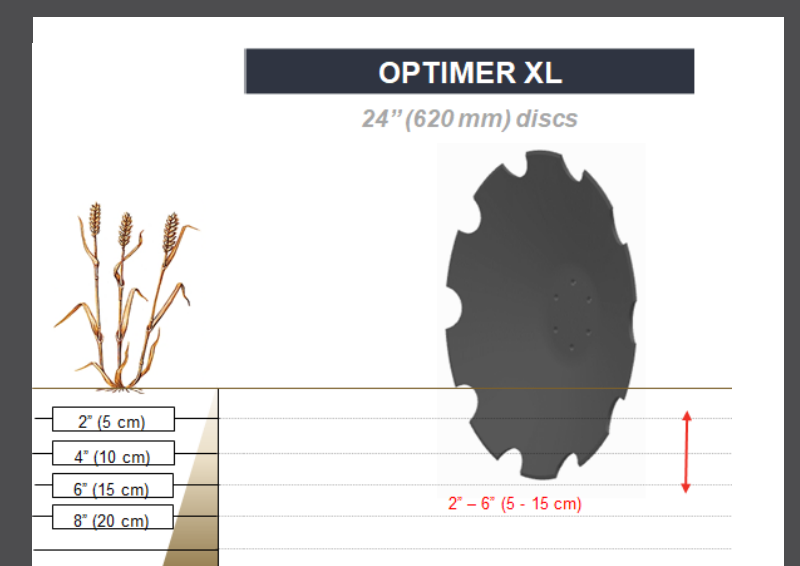
OPTIMER L

The Optimer L, with 20" (510 mm) discs, works best with shallower tillage and lighter residue. This "small disc" machine is ideal for spring seedbed preparation.



OPTIMER XL

The Optimer XL, with larger 24" (620 mm) discs, can perform in either fall or spring. This "large disc" machine is more favorable for deeper work and greater amounts of tough residue, such as corn or high-yielding wheat.



HIGH-SPEED COMPACT DISCS OPTIMER L/XL SERIES

Customized to Fit Your Operation

OPTIONAL EQUIPMENT



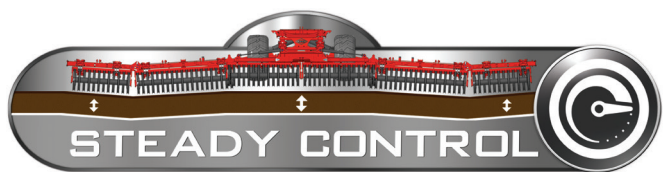
INTERMEDIATE LEVELING HARROW

The intermediate leveling harrow mounts between the rear set of discs and the roller. This row of tines helps manage the soil flow from the disc blades and helps to break up any clumps of straw or stubble. The action of the harrow makes a more level, even soil surface prior to the final finishing pass from the roller.



SH SEEDER

SH seeders permit conservation tillage and cover crop seeding in a single pass. The SH seeders consist of a hopper, metering unit, and tubes that distribute the seeds between the discs and rear roller. This allows the seeds to be incorporated and lightly covered with soil for good germination potential.



STEADY CONTROL

The KUHN exclusive Steady Control feature controls the hydraulic pressure on each section using the tractor's hydraulic compensation. If the ground contours force a section to go up, the rising pressure returns hydraulic oil to the tank, while a decrease in pressure brings more oil into the circuit to compensate for low-lying areas. In this way, a constant pressure and uniform working depth are maintained, promoting consistent seed emergence.

Available on the Optimer L 6000/7500 & Optimer XL 6000/7500 models.



GAUGE WHEELS

These wheels, combined with a floating drawbar, help the machine track straight and follow ground contours in uneven terrain.



ADDITIONAL FRAME WEIGHTS

If you run in very hard soils or extremely tough residue, a set of additional frame weights is offered. This option increases the overall machine weight by 1,014 lbs (460 kg).

Available only on Optimer L & XL 100 models.

Technical Specifications

	OPTIMER L 300	OPTIMER L 350	OPTIMER L 400	OPTIMER L 4000	OPTIMER L 5000	OPTIMER L 6000	OPTIMER L 7500
Minimum engine horsepower requirement	90 ENG hp (66 kW)	105 ENG hp (77 kW)	120 ENG hp (88 kW)		150 ENG hp (112 kW)	180 ENG hp (133 kW)	225 ENG hp (166 kW)
Maximum engine horsepower allowed	150 ENG hp (110 kW)	175 ENG hp (129 kW)	200 ENG hp (147 kW)	240 ENG hp (178 kW)	250 ENG hp (188 kW)	300 ENG hp (224 kW)	360 ENG hp (265 kW)
Working width	9'10" (3.0 m)	11'6" (3.5 m)	13'1" (4.0 m)		16'5" (5.0 m)	19'8" (6.0 m)	24'7" (7.5 m)
Transport width	9'10" (3.0 m)	11'6" (3.5 m)	13'1" (4.0 m)	8'8" (2.6 m)		9'10" (3.0 m)	
Notched disc diameter	20" (510 mm)						
Number of discs	24	28	32		40	48	60
Working depth	1.2" - 4" (3 - 10 cm)						
Side deflectors	Left and right as standard						
Hitch type	Cat. 2, 3N, 3		Cat. 3N, 3		Cat. 3		Cat. 3, 4N, 4
Machine weight approx.	3,946 lbs (1,790 kg)	4,586 lbs (2,080 kg)	5,181 lbs (2,350 kg)	9,700 lbs (4,400 kg)	10,880 lbs (4,935 kg)	12,346 lbs (5,600 kg)	13,700 lbs (6,200 kg)
Road lights and signaling	-			Standard			

Technical Specifications

	OPTIMER XL 300	OPTIMER XL 350	OPTIMER XL 400	OPTIMER XL 4000	OPTIMER XL 5000	OPTIMER XL 6000	OPTIMER XL 7500
Minimum engine horsepower requirement	105 ENG hp (77 kW)	140 ENG hp (105 kW)	160 ENG hp (120 kW)		200 ENG hp (149 kW)	300 ENG hp (224 kW)	340 ENG hp (254 kW)
Maximum engine horsepower allowed	165 ENG hp (123 kW)	190 ENG hp (141 kW)	220 ENG hp (164 kW)	200 ENG hp (149 kW)	275 ENG hp (205 kW)	360 ENG hp (265 kW)	450 ENG hp (336 kW)
Working width	9'10" (3.0 m)	11'6" (3.5 m)	13'1" (4.0 m)		16'5" (5.0 m)	19'8" (6.0 m)	23'10" (7.3 m)
Transport width	9'10" (3.0 m)	11'6" (3.5 m)	13'1" (4.0 m)	8'8" (2.6 m)		9'10" (3.0 m)	
Notched disc diameter	24.4" (620 mm)						
Number of discs	24	28	32		40	48	58
Working depth	2" - 6" (5 - 15 cm)						
Side deflectors	Left and right as standard						
Hitch type	Cat. 2, 3N, 3		Cat. 3N, 3		Cat. 3, 4N, 4		
Machine weight approx.	4,376 lbs (1,985 kg)	5,048 lbs (2,290 kg)	5,720 lbs (2,595 kg)	9,524 lbs (4,320 kg)	10,913 lbs (4,950 kg)	16,017 lbs (7,265 kg)	17,692 lbs (8,025 kg)
Road lights and signaling	-			Standard			



MyKUHNS

THE LINK TO MY SUCCESS

MyKUHNS is your online customer portal where you can access machine operator's manuals, parts catalog and more! The site is available on computer, phone or tablet, so you can access your fleet's information anywhere around the farm. Create an account and register your KUHN equipment today!



MORE PRODUCTS TO MEET YOUR NEEDS!



1. Seed Drills - 2. Fertilizer Spreaders - 3. Plows- 4. Manure Spreaders - 5. Packers - 6. Primary Tillage Systems

KUHN NORTH AMERICA, INC. | Corporate Headquarters | 1501 West Seventh Avenue - Brodhead, WI 53520

For more information about your nearest KUHN dealer, visit our website www.kuhn.com

Information given in this document is only for informational purposes and is non-contractual. Our machines are in compliance with North American safety standards. In our literature, and for improved illustration of certain details, some safety devices may not be in operating position. When operating these machines, these devices must be operated in accordance with the requirements indicated in the operator's manuals and assembly manuals. We reserve the right to change any designs, specifications or materials listed without further notice. Machines and equipment in this document can be covered by at least one patent and/or registered design. Trademarks cited in this document may be registered in one or several countries.

Printed in USA 706557US 0622 Copyright 2022 Kuhn North America, Inc.

