



Mounted Rollover Plows
MASTER / MULTI-MASTER / VARI-MASTER



DEPENDABILITY MATTERS

KUHN MOUNTED ROLLOVER PLOWS PROVIDE FASTER, MORE EFFICIENT OPERATION WITH NO DEAD FURROWS AND LESS SOIL COMPACTION. KUHN PLOWS HAVE MANY DIFFERENT TYPES OF MOLDBOARDS TO CHOOSE FROM DEPENDING ON THE SEASON, SOIL CONDITIONS AND TRASH COVERAGE. WITH KUHN'S INCORPORATED RESET SYSTEMS, THESE PLOWS WILL KEEP WORKING THROUGH LONG DAYS AND SEASONS WITH MINIMAL DOWNTIME.



TIME TESTED

With KUHN plows, you are investing in a time-tested yet innovative solution for maximizing your crop's yield potential, while at the same time keeping your operating costs in check.

BUILT TO LAST

Benefit from a number of features including reinforced box sections, rapid adjustment of furrow widths and superior protection systems. With renowned reliability and long working life, you'll be able to focus on more important things while out in the field.

Summary

Shared Features	4-8
Master 103.....	9
Multi-Master L	10-11
Vari-Master L	12-13
Multi-Master 183.....	14-15
Vari-Master 183.....	16-17
Specifications	18-19

Models	Main Frame Size	Number of Bottoms
Master 103	3.9" x 3.9" (100 x 100 mm)	2 – 4
Multi-Master	5.9" x 5.9" (150 x 150 mm) or 7.1" x 7.1" (180 x 180 mm)	4 – 7
Vari-Master	5.9" x 5.9" (150 x 150 mm) or 7.1" x 7.1" (180 x 180 mm)	Trailer Only



HIGH-QUALITY BUILDING BLOCKS FOR LONG LASTING PLOWS

All KUHN plows, regardless of size or model range, are built with the same high-quality building blocks. Components such as moldboards, shares, and points are interchangeable. No matter how large or small your operation is, you can be sure you are getting durable, professional-quality components designed and manufactured in a state-of-the-art KUHN factory.

CHOOSE THE MOLDBOARD THAT FITS YOUR SOIL CONDITIONS



L MOLDBOARD

The L moldboard is a multi-purpose design that works especially well for in-furrow plowing. Its design cuts a wide furrow bottom to accommodate large tractor tires.

The L moldboard will also create varying field finishes depending on the working speed. Slower speeds make more pronounced furrows, while faster speeds provide a flatter field finish.



H4 MOLDBOARD

The H4, helicoidal, scandinavian-type moldboard provides well-formed plowing to a normal depth range of 7-12" (18-30 cm). The share is fitted with a reversible/replaceable point that greatly increases the life of the share.

Recommended for fall plowing, the H4 bottom is especially suited for heavy and damp clays. Furrow passes are well defined and trash burial is excellent.



N MOLDBOARD

The helicoidal-cylindrical, semi-digger N moldboard plows to a depth of 14" (36 cm). Designed as a highly versatile bottom, it is cylindrical at front, helicoidal at rear. A low draft ensures a partly broken furrow with excellent trash burial.

Recommended for spring plowing, this moldboard is versatile and works well in sandy or clay soils.



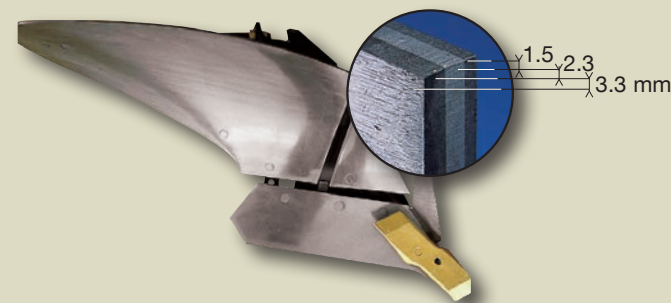
VP SLATTED MOLDBOARD

The VP slatted moldboard is composed of independent and interchangeable slats. Reduces pulling power required, due to a lower moldboard surface area.

Designed for use in extremely sticky muck and clay soils. Not for use in sand or loam soils or in soils with rocks or stones. The multiple slats allow individual replacement when worn.

MOLDBOARDS WITH UNEQUAL LAYER TRIPLEX STEEL

Moldboards are made of unequal layer, heat-treated Triplex steel that increases working life by up to 40% longer than standard steel with a hard wearing surface over 1/8" (3 mm) thick.



DESIGNED TO REDUCE WEAR

Shares are forged with a force of 6,000 tons (5,440 metric tons) ensuring:

- Excellent wear resistance
- Self-sharpening profile due to the grain in the steel resulting from the forging process



SHARE POINTS

OLYMPIC® (Standard)



Reversible for maximum efficiency. More pronounced form at wearing zones on the point for longer life and better protection of the landside. Point is self-sharpening for good ground penetration at all times.

MARATHON®



Reversible for maximum efficiency and features a step, resulting in better landside protection.

SUPER MARATHON®



Fitted with a tungsten carbide tip. High wear resistance with four to five times the life of a traditional share point. A sharp working edge is maintained for excellent ground penetration. Excellent for highly abrasive soils without rocks or stones.

Horsepower	40	60	80	100	120	140	160	180	200	220	240	260	280	300	320	340	360	380	400	420	
Master 103		2 BOTTOM	3 BOTTOM																		
Multi-Master L				4 BOTTOM		4 BOTTOM NSH				5 BOTTOM NSH				6 BOTTOM NSH							
Vari-Master L					4 BOTTOM NSH				5 BOTTOM NSH				6 BOTTOM NSH								
Master 183										5 BOTTOM T			6 BOTTOM T								
											5 BOTTOM NSH			7 BOTTOM T							
												6 BOTTOM NSH									

CHOOSE YOUR PLOW LEG PROTECTION

With the Master Series, you can customize your plow leg protection to best suit your working conditions. Traction-Bolt (T) security is an economical choice and is best suited for sandy or loam soils free of large rocks. Non-Stop Hydraulic (NSH) reset is the trouble-free choice for rocky or hard soils and provides ultimate protection with continuous plowing.



T



NSH

TRACTION-BOLT (T) – AVOIDS THE PROBLEMS OF SHEAR BOLTS

A clean break of the traction bolt, following a force of 5,280 – 8,820 pounds (2,395 – 4,000 kg) at the plow point, avoids the risk of nuisance shearing.

- The bolt (A) runs with the line of force and is pulled apart – unlike shear bolts which are cut
- The bolt support never deforms or becomes rounded
- Once the bolt breaks, it simply falls away for quick and easy replacement
- After years of use, the plow bottoms remain perfectly inline



NON-STOP HYDRAULIC (NSH) RESET

When a field obstacle is met, a rapid breakaway of the plow leg occurs. Once the obstacle is passed there is an increase in pressure, bringing the bottom quickly and firmly back into working position. The system also acts as a shock absorber in rocky ground, increasing plow life.

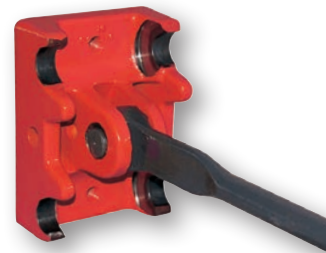
BENEFITS:

- 55 pounds lighter per bottom than a mechanical auto reset system
- Share points lift up 24" or move 8" to either side
- More reliability and less wear with hydraulic technology
- Quick share point adjustments from 1,320 – 2,860 pounds (599 – 1,297 kg) of tripping pressure

Optional MaxiBar system: allows the top tripping pressure to be increased from 2,860 – 5,500 pounds (1,297 – 2,495 kg), while maintaining the flexibility of the system. Recommended for very hard soils such as dried clay.

HEAVY-DUTY PLOW LEG ARTICULATION AND TIE ROD

All force is transmitted in a straight line through a one-piece forged and heat treated tie rod.



CHOOSE YOUR LEVEL OF ADJUSTABILITY

Choose either bolted simplicity or instant hydraulic control of cutting width. With KUHN you have a choice of either the Multi-Master or Vari-Master system to meet your specific needs.



MULTI-MASTER

Adjustments can easily be made to the working width, in both the Traction-Bolt and Non-Stop Hydraulic machines, by pivoting the plow leg support on the beam and placing the bolt in the corresponding width setting hole.

- Master 103: 14" or 16" (35 or 40 cm)
- Multi-Master L: 14", 16", 18", or 20" (35, 40, 45, or 50 cm)
- Multi-Master 183: 14", 16", 18", or 20" (35, 40, 45, or 50 cm)



VARI-MASTER

The working width is changed hydraulically from the tractor cab. The correction of the front furrow and plow aligning settings are carried out automatically as the width changes. For plow rollover, the plow bottoms fold up automatically to their narrowest width for the maximum possible ground clearance. After rollover, the plow returns to the normal working width.

- Vari-Master L: 14"-22" (36 – 56 cm) in 38" (97 cm) point-to-point
- Vari-Master 183: 12"-19" (30 – 48 cm) in 38" (97 cm) point-to-point

VARIABLE WIDTH ADVANTAGES

- Instant adaptation to available traction
- Saves time and reduces fuel consumption
- Maintain working speed in difficult conditions
- Able to bury different trash levels
- Neater field finish
- Avoids obstacles and cleans up difficult, unplowed areas

CUSTOMIZE YOUR TRASH BURIAL



TRASHBOARD

Enhances trash burial in difficult conditions where the quantity of trash may otherwise block-up the skimmers.



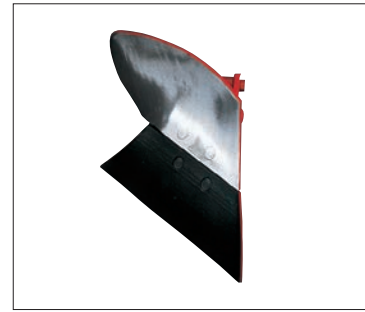
HELICOIDAL ZH SKIMMER

Helicoidal skimmer for deep trash burial. Well adapted to grasslands and fields with cover crops, especially when plowing at slower speeds.



ZRL HIGH-CAPACITY SKIMMER

High-capacity skimmer for trash incorporation throughout the soil profile. Excellent straw and corn trash burial in high-yielding crops.



ZXL ALL-PURPOSE SKIMMER

Versatile skimmer with a large share. Well suited to plowing moderate amounts of small grain or corn stubble.



PRESS ARMS WITH HYDRAULIC RELEASE

The press arm options allow for the use of aftermarket rollers or furrow presses with easy hookup and hydraulic push-off. On the pickup hook part of the arm, where there is the most risk of damage, all grease zerks and hydraulic hoses are protected inside the structure of the head. Depending on the option selected, the arm folds up either mechanically or hydraulically for transport.



DISC COULTERS

Discs have a diameter of 20" (51 cm), plain or notched, with the added choice on the Traction-Bolt models of a 22" (56 cm) disc. The disc serves to cut the furrow wall in front of the plow bottom giving a cleaner finish, and improving trash sizing and incorporation.

INDEPENDENT, EASY TO ADJUST SKIMMERS (103 and 183 models only.)



Each skimmer is totally independent left from right and is firmly held in a sheath-like support. The skimmers are shear bolt protected and are adjustable in three directions:

- 1 Forward and backward – with a choice of three positions, the sheath bolts to the leg support via countersunk holes to avoid any risk of free play.
- 2 Up and down – rapid and precise height adjustment [7 1/2" (19 cm) of adjustment] also with countersunk holes in the skimmer leg for easy locking of the leg at the desired height.
- 3 Side to side – for correct adjustment in relation to the disc coulters (where fitted).

MASTER 103

HIGH-STRENGTH HEADSTOCK AND FRAME

The Master 103 plows are built to be durable, reliable and economical machines. Only available in the Multi-Master version, these plows have a large trash burial capacity with the ability to adjust the Traction-Bolt models from 28" to 29 1/2" (71 cm to 75 cm) of underbeam clearance. This range offers independently mounted skimmers for quick and easy adjustment. The 103 plows have a depth control wheel in line with the frame and a transport wheel option fitted with suspension.



MONOBLOC HEADSTOCK

Simple adjustment of leveling by stops. Easy storage with built-in toolbox in headstock for models 3E/ 4 NSH.

Rollover shaft diameter (hardened alloy):
 - 2 3/4" (7 cm) on 2E/ 3 T
 - 3 7/16" (8.5 cm) on 2E/ 3 NSH and 3E/ 4 T
 - 3 1/2" (9 cm) on 3E/ 4 NSH



RUBBER DEPTH WHEEL

The depth wheel follows any change of plowing width. It features simple bolt adjustments, with the ability to set left and right sides independently. It can be placed in many positions on the frame to ensure optimum positioning for all conditions.

Master 103: 24" (61 cm) wheel



MULTI-MASTER L

PRACTICAL PLOWING, GREAT PERFORMANCE

The Multi-Master L is a mid-range plow especially well-suited to working behind maneuverable, power-dense utility and row-crop tractors. The main frame forms a solid foundation for 4 to 6 bottoms with either Traction-Bolt (T) or Non-Stop Hydraulic (NSH) reset. Our "Multi" mechanical working width adjustment system allows you to set each furrow up to 20" (50 cm), while both In-Furrow and On-Land versions are offered to match up with your tractor and plowing practices. You can also choose from a wide range of options to further customize the Multi-Master L to your exact specifications.



MAIN FRAME

The main frame of the Multi-Master L is optimized for both strength and weight. The dimensions of the main beam are 5.9" x 5.9" (150 x 150 mm), with reinforcements added in critical areas.

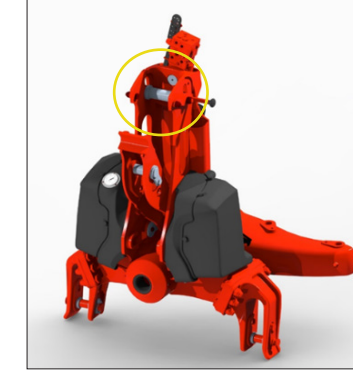
The 4E and 5E models allow an additional set of bottoms to be fitted to increase the size of the plow if additional capacity is required.

CUSTOMIZED TO FIT YOUR OPERATION



STANDARD HEADSTOCK

Features a hollow 5.1" (130 mm) diameter rolover shaft and is designed for easy hitching to Cat. 3N or Cat. 4N tractor hitches, depending on the pin size selected. Adjustments can be made without tools and the lower links offer two pin attachment holes to optimize positioning of the plow relative to the tractor.



EASYDRIVE HEADSTOCK

The optional EasyDrive headstock utilizes many of the same features as the standard headstock, with the addition of an easy transport feature (circled above) that is meant to be used with the optional rear transport wheel. The EasyDrive headstock features a quick-release function that allows the plow to be transported without disconnecting the top link, saving time at the start and finish of each field.



OPTIDRIVE HEADSTOCK

The optional OptiDrive headstock is the ultimate headstock available for a mounted plow. In addition to the basic features of the standard headstock and easy transport system of the EasyDrive, the OptiDrive also includes a suspension system. The cylinder and accumulator work together to reduce shock loads on the plow and tractor by almost 50%, greatly improving operator comfort.



DEPTH WHEEL WITH SHOCK ABSORBER

The shock absorber removes the shock of the wheel falling during rolover and also ensures the wheel is in the correct rearward inclined position as the plow is lowered back into work mode.



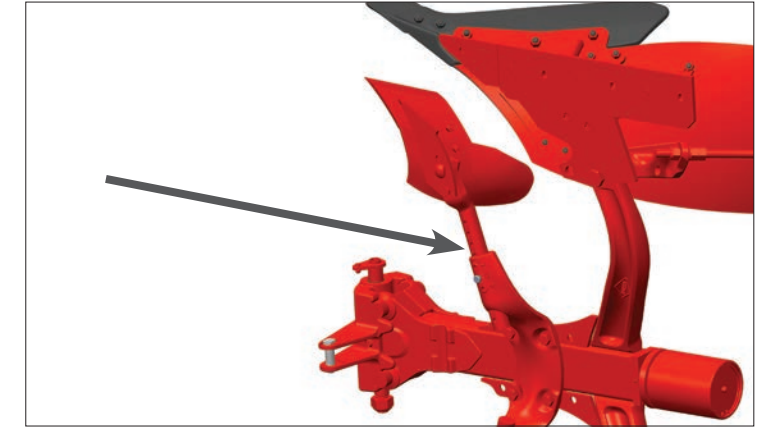
TRANSPORT WHEEL WITH SUSPENSION

The optional 9" transport wheel helps create a safe, comfortable ride for operators moving their Multi-Master L on the road between fields. It can easily be switched from field position to transport position when a particular field is finished.



HEADSTOCK AND FRAME DESIGN

The headstock and frame design gives operators the choice of on-land or in-furrow operation with tractors up to 300 horsepower. The specialized shape of the main frame maximizes the offset without adding unnecessary weight to the plow. With this design, high-quality plowing with duals, or even tracks, is no problem with the On-Land versions.



SKIMMER DESIGN

The skimmer design features tool-free adjustments for both depth and attack angle. Changing both the depth and attack angle promotes excellent residue flow and burial in all conditions.



HYDRAULIC WIDTH ADJUSTMENT WITH INTEGRATED LINKAGE

The standard hydraulic adjustment changes the furrow width to match a variety of soil types. Exclusive linkages integrated into the frame protect the adjustment components from damage.



WHEEL OPTIONS

The Vari-Master L can be customized to suit any operation with multiple wheel options that provide outstanding depth control and safe, comfortable road transport.

VARI-MASTER L

EFFICIENT PLOWING MEETS IMPRESSIVE PERFORMANCE

The Vari-Master L fully mounted rollover plow series sets a new standard for efficient plowing performance. Available with 4 to 6 bottoms, In-Furrow and On-Land configuration are available to meet the needs of a variety of operations. The new skimmers, with KUHN-patented tool-free adjustments, save time while optimizing trash burial. Standard hydraulic working width adjustment quickly adapts the furrow from 14" to 22" (36 to 56 cm) to match working depth and soil characteristics. Non-Stop Hydraulic (NSH) reset protects the plow from damage and quickly returns the plow to work without operator intervention. Like all KUHN plows, the Vari-Master L is equipped with the exclusive Triplex steel moldboards for unmatched durability in the field.



GENUINE KUHN PARTS®

No part better fits a KUHN machine than an original KUHN part

Here at KUHN, we produce spare parts built to last in our very own foundries, our forges and our ultra-modern production facilities. You can trust in our longstanding know-how, based on almost two centuries of experience. With KUHN Parts, you can be assured of the highest quality parts and customer service in the agriculture equipment industry. Seven distribution centers, located strategically throughout North America, ensure that KUHN, KUHN Knight and KUHN Krause dealers have access to parts and assistance so you can get back in the tractor.





MULTI-MASTER 183

DESIGNED TO PROVIDE OPERATORS WITH THE ULTIMATE VERSATILITY

The Multi-Master 183 plows are designed to meet the requirements of many operations, providing a machine that is easy to use and strong enough to meet the demands of today's mid-size to large operations to achieve maximum productivity. This plow range is available from 5 to 7 bottoms in either Traction-Bolt or Non-Stop Hydraulic reset. The strength, simplicity and different options available make these plows fully adaptable to your conditions.

EXCLUSIVE

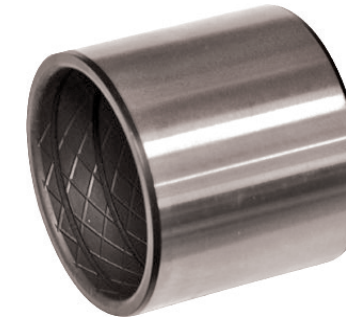
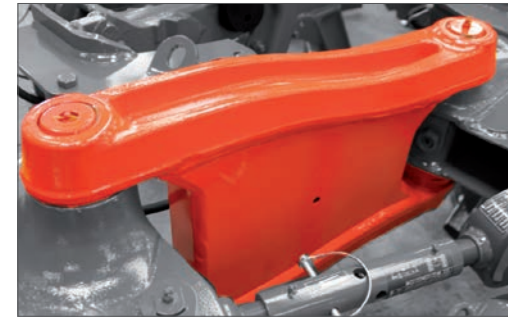


AVOID WEAR AND TEAR WITH OPTIDRIVE HEADSTOCK

Both the tractor and plow are protected from wear as the vertical travel range absorbs shocks during maneuvers. The suspension adapts to the weight of the different plows by changing the pressure on the Optidrive hydraulic system.

- While plowing, the Optidrive system is automatically locked for proper draft control on the tractor.
- The suspension is active in headlands, protecting both the tractor and the plow.

Switching from working to transport is easy and does not require adjustment or unhitching of the top link, thanks to the moveable double frame.



EXCLUSIVE TO KUHN

FORGED AND HEAT TREATED ONE PIECE MAIN LINK

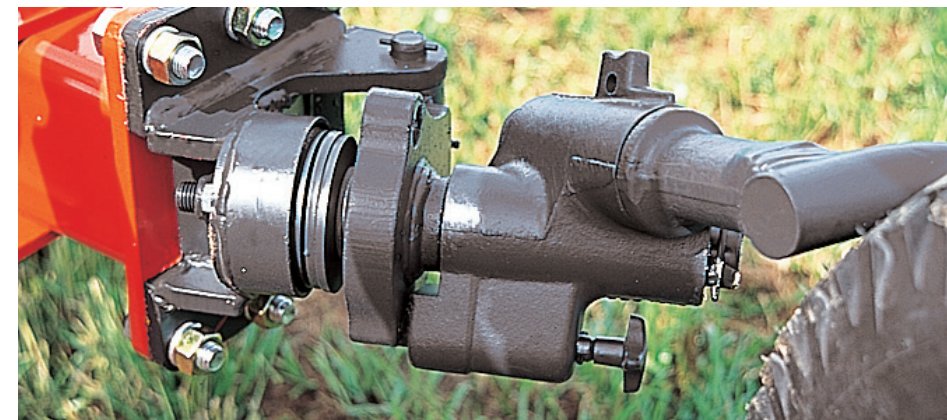
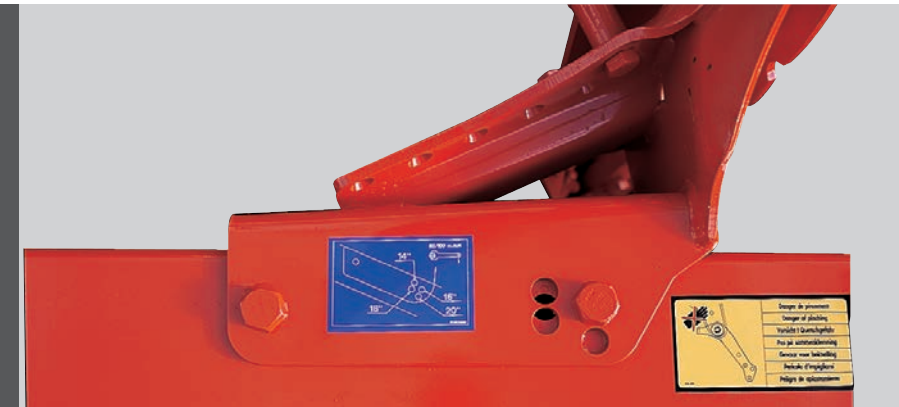
Designed for strength and long life, the main link is assembled with either bronze or steel bushings, depending on the model of plow.

All moving pivot points are chromed, prevented from rotating and assembled with wear bushings to reduce risk of jamming and provide low maintenance.

EXCLUSIVE TO KUHN

MAIN BEAM

The 7" (18 cm) main beam on the Multi-Master 183 is supported by a side-mounted, triangular reinforcement welded along the length of the front section. This strengthens the beam in this high-stress area and gives substantial advantages when compared to a conventional plow design.



TRANSPORT WHEEL WITH SUSPENSION

The plow can be transported on the road in complete safety thanks to a transport wheel, equipped with its own suspension system to protect the plow and tractor from transport shocks. The wheel can be swung into the transport position in a single movement by pulling the locking pin.

Master 183: 26" (66 cm) wheel

MyKUHN

THE LINK TO MY SUCCESS

www.mykuhn.com

Sign up!

VARI-MASTER 183

HIGHLY ADAPTABLE TO SPECIFIC FIELD CONDITIONS

The KUHN Vari-Master 183 plow series meets the demands of today's row-crop and specialty farms. Traction-Bolt (T) or Non-Stop Hydraulic (NSH) reset options provide complete protection of the plow leg with minimal interruption to your productivity. Vari-Master plows are highly adaptable to specific field conditions. The quick set up into work/transport positions, easy adjustments and variable working widths help you cover more acres in less time.



REDUCE SOIL COMPACTION

The On-Land models are designed for tractors fitted with wide wheels, tracks and dual wheels. The large dimensioned parallelogram system enables this plow range to adapt to tractors with an overall width of up to 10 1/2' (3 m), while at the same time maintaining the possibility to plow in-furrow (as shown above). Furrow compaction can be avoided by plowing on-land, a consideration when using the large tractors needed for this range.



EXCLUSIVE TO KUHN

ONLY ONE ADJUSTMENT NECESSARY WITH COMBINED FRONT FURROW WIDTH/ANGLING

The front furrow width is adjusted to its optimum setting according to the tractor linkages and ground conditions.

Because of the parallelogram of the two linkages, any adjustment in front furrow width automatically adjusts the angling of the plow, allowing the tractor to always pull in perfect line.

Adjustments are quickly carried out by simply activating the hydraulic cylinder.

One adjustment is sufficient, unlike conventional systems where the front furrow width and the plow alignment are separated. With the conventional system as one adjustment interacts with the other, several successive adjustments are necessary.

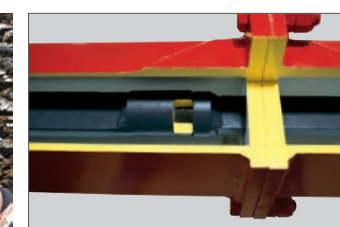


ONLY ONE ADJUSTMENT NECESSARY

- Instant adaptation to available traction
- Time savings and reduced fuel consumption
- Maintain working speed in difficult conditions
- Ability to cope with different levels of trash
- Clean field finish
- Avoid obstacles and tidy up difficult unplowed areas



- On the Vari-Master models, the entire variable-width linkage system is enclosed in the plow structure giving maximum protection from water, dust and possible shocks.
- All moving pivot points are chromed, prevented from rotating and assembled with wear bushings to limit risk of jamming and provide low maintenance.



MAIN BEAM

The 7" (18 cm) main beam on the Vari-Master 183 is strengthened by a triangular reinforcement welded along the length of the front section, a substantial advantage compared to conventional plow design.



AVOID DAMAGE TO HYDRAULIC HOSES

The rollover shaft is assembled to allow the passage of hydraulic hoses through the center of the headstock, preventing twisting during rollover and possible damage.

FORGED AND HEAT TREATED ONE PIECE MAIN LINK

Designed for strength and long life, the main link is assembled with steel bushings and the pins locked to prevent rotation.

Technical Specifications														Master / Multi-Master / Vari-Master Series			
	MASTER 103 2E	MASTER 103 3	MASTER 103 3E	MASTER 103 4	MULTI-MASTER L 4E	MULTI-MASTER L 5	MULTI-MASTER L 5E	MULTI-MASTER L 6	MULTI-MASTER L OL 4E	MULTI-MASTER L OL 5	MULTI-MASTER L OL 5E	MULTI-MASTER L OL 6	VARI-MASTER L 4E	VARI-MASTER L 5	VARI-MASTER L 5E	VARI-MASTER L 6	
Number of bottoms per side	2	3		4	4	5	5	6	4	5		6	4	5		6	
Extendable by one bottom	Yes	No	Yes	No	Yes	No	Yes	No	Yes	No	Yes	No	Yes	No	Yes	No	
Standard moldboards	L : Wide helicoidal				L : Wide helicoidal			L : Wide helicoidal		L : Wide helicoidal				L : Wide helicoidal			
Hydraulic rollover with 1 cylinder	Standard				Standard			Standard		Standard				Standard			
Maximum tractor power	60 hp (45 kW)	90 hp (66 kW)		120 hp (88 kW)	200 hp (150 kW)	250 hp (186 kW)	250 hp (186 kW)	300 hp (224 kW)	200 hp (150 kW)	250 hp (186 kW)		300 hp (224 kW)	200 hp (150 kW)	250 hp (186 kW)		300 hp (224 kW)	
Approximate machine weight for T version	1,168 lbs (530 kg)	1,631 lbs (740 kg)	1,664 lbs (775 kg)	2,127 lbs (965 kg)	3,792 lbs (1,720 kg)	4,343 lbs (1,970 kg)	4,319 lbs (1,959 kg)	4,866 lbs (2,207 kg)	4,052 lbs (1,838 kg)	4,601 lbs (2,087 kg)	4,757 lbs (2,075 kg)	5,121 lbs (2,323 kg)	4,202 lbs (1,906 kg)	4,802 lbs (2,178 kg)	4,751 lbs (2,155 kg)	5,333 lbs (2,419 kg)	
Approximate machine weight for NSH version	1,488 lbs (675 kg)	1,973 lbs (895 kg)	2,127 lbs (965 kg)	2,623 lbs (1,190 kg)	4,156 lbs (1,885 kg)	4,784 lbs (2,170 kg)	4,764 lbs (2,161 kg)	5,390 lbs (2,445 kg)	4,414 lbs (2,002 kg)	5,042 lbs (2,287 kg)	5,022 lbs (2,278 kg)	5,046 lbs (2,561 kg)	4,429 lbs (2,009 kg)	5,068 lbs (2,299 kg)	5,024 lbs (2,279 kg)	5,648 lbs (2,562 kg)	
Working width	14" or 16" (35 or 40 cm) delivered at 16" (40 cm)				14", 16", 18" or 20" (35, 40, 45, or 50 cm) hydraulically adjustable				14", 16", 18", or 20" (35, 40, 45, or 50 cm) hydraulically adjustable				12" - 22" (30 - 56 cm) hydraulically adjustable				
Underbeam clearance	27.5" (70 cm)				33.5" (85 cm) T, 31.5" (80 cm) NSH			33.5" (85 cm) T, 31.5" (80 cm) NSH		33.5" (85 cm) T, 31.5" (80 cm) NSH				33.5" (85 cm) T, 31.5" (80 cm) NSH			
Point to point clearance	35" (90 cm)				39.8" (101 cm)			37.4" (95 cm)		39.8" (101 cm)		37.4" (95 cm)		39.8" (101 cm)		37.4" (95 cm)	
Offset and angling adjustment	Mechanical				Hydraulic offset and mechanical angling			Hydraulic offset and mechanical angling		Hydraulic offset and mechanical angling				Hydraulic offset and mechanical angling			
Hitch	Cat. 2 with cross-shaft				Cat. 3 / 4N with cross-shaft			Cat. 3 / 4N with cross-shaft		Cat. 3 / 4N with cross-shaft				Cat. 3 / 4N with cross-shaft			
Main beam dimension	3.9"x 3.9" (100 x 100 mm)				5.9" x 5.9" (150 x 150 mm)			5.9" x 5.9" (150 x 150 mm)		-				5.9" x 5.9" (150 x 150 mm)			
Extension beam dimension	3.9" x 3.9" (100 x 100 mm)				5.9" x 5.9" (150 x 150 mm)			5.9" x 5.9" (150 x 150 mm)		-				5.9" x 5.9" (150 x 150 mm)			
Hydraulic beam folding	-				-			-		-				-			
Required tractor hydraulic connections	1 DA for rollover				2 DA for rollover and offset			2 DA for rollover and offset		2 DA for rollover and offset				3 DA for rollover, working width, and offset			
Adjustable depth wheel with tire	600 x 210 mm standard				690 x 320 mm standard			690 x 320 mm standard		690 x 320 mm standard				690 x 320 mm standard			
Maximum outside tractor tire width when working on-land	-				-			-		10'4" (3.1 m)				-			

Technical Specifications														Master / Multi-Master / Vari-Master Series		
	VARI-MASTER L OL 4E	VARI-MASTER L OL 5	VARI-MASTER L OL 5E	VARI-MASTER L OL 6	MULTI-MASTER 183 5E	MULTI-MASTER 183 6E	MULTI-MASTER 183 7	MULTI-MASTER 183 OL 5E	MULTI-MASTER 183 OL 6E	MULTI-MASTER 183 OL 7	VARI-MASTER 183 5E	VARI-MASTER 183 6E	VARI-MASTER 183 7			
Number of bottoms per side	4	5		6	5	6	7	5	6	7	5	6	7			
Extendable by one bottom	Yes	No	Yes	No	Yes		No	Yes	Yes on T model, No on NSH model	No	Yes		No			
Standard moldboards	L : Wide helicoidal				L : Wide helicoidal			L : Wide helicoidal		L : Wide helicoidal			L : Wide helicoidal			
Hydraulic rollover with 1 cylinder	Standard				Standard			Standard		Standard			Standard			
Maximum tractor power	200 hp (150 kW)	250 hp (186 kW)		300 hp (224 kW)	275 hp (202 kW)	330 hp (246 kW)	385 hp (287 kW)	275 hp (202 kW)	330 hp (246 kW)	385 hp (287 kW)	275 hp (202 kW)	330 hp (246 kW)	385 hp (287 kW)			
Approximate machine weight for T version					4,508 lbs (2,045 kg)	5,093 lbs (2,310 kg)	5,644 lbs (2,560 kg)	5,011 lbs (2,273 kg)	5,302 lbs (2,405 kg)	5,853 lbs (2,655 kg)	4,828 lbs (2,190 kg)	5,335 lbs (2,420 kg)	5,842 lbs (2,650 kg)			
Approximate machine weight for NSH version	4,675 lbs (2,120 kg)	5,291 lbs (2,400 kg)	5,401 lbs (2,500 kg)	5,898 lbs (2,675 kg)	4,971 lbs (2,255 kg)	5,633 lbs (2,555 kg)	-	5,357 lbs (2,430 kg)	5,886 lbs (2,670 kg)	-	5,027 lbs (2,280 kg)	5,644 lbs (2,560 kg)	6,261 lbs (2,840 kg)			
Working width	14" - 22" (35 - 56 cm) hydraulically adjustable				14", 16", 18", or 20" (35, 40, 45, or 50 cm) delivered at 18" (45 cm)			14", 16", 18", or 20" (35, 40, 45, or 50 cm) delivered at 18" (45 cm)			12" - 19" (30 - 48 cm) hydraulically adjustable					
Underbeam clearance	31.5" (80 cm)				31.5" (80 cm)			31.5" (80 cm)		31.5" (80 cm)			31.5" (80 cm)			
Point to point clearance	39.8" (101 cm)		37.4" (95 cm)		38" (96 cm)			38" (96 cm)		35" (89 cm) for T models; 38" (97 cm) for NSH models			38" (96 cm)			
Offset and angling adjustment	Hydraulic offset and mechanical angling				Standard			Standard		Hydraulic offset and mechanical angling adjustment			Standard combined hydraulic offset and angling adjustment			
Hitch	Cat. 3 / 4N with cross-shaft				Cat. 3 with cross-shaft			Cat. 3 with cross-shaft		Cat. 3 with cross-shaft			Cat. 3 with cross-shaft			
Main beam dimension	5.9" x 5.9" (150 x 150 mm)				7.1" x 7.1" (180 x 180 mm)			7.1" x 7.1" (180 x 180 mm)		7.1" x 7.1" (180 x 180 mm)			7.1" x 7.1" (180 x 180 mm)			
Extension beam dimension	5.9" x 5.9" (150 x 150 mm)				7.1" x 7.1" (180 x 180 mm)			7.1" x 7.1" (180 x 180 mm)		7.1" x 7.1" (180 x 180 mm)			7.1" x 7.1" (180 x 180 mm)			
Hydraulic beam folding	-				-			-		Standard (allows work in-furrow)			Standard with memory cylinder			
Required tractor hydraulic connections	3 DA for rollover, working width, and offset				2 DA for rollover and angling/offset			2 DA for rollover and angling/offset					3 DA for rollover, working width, and angling/offset			
Adjustable depth wheel with tire	690 x 320 mm standard				690 x 320 mm standard			690 x 320 mm standard		690 x 320 mm standard			690 x 320 mm standard			
Maximum outside tractor tire width when working on-land	10'4" (3.1 m)									10'6" (3.2 m)						

MyKUHNN

THE LINK TO MY SUCCESS

MyKUHNN is your online customer portal where you can access machine operator's manuals, parts catalog and more! The site is available on computer, phone or tablet, so you can access your fleet's information anywhere around the farm. Create an account and register your KUHN equipment today!



MORE PRODUCTS TO MEET YOUR NEEDS!



1. Power Tillers - 2. Power Harrows - 3. Disc Harrows - 4. Fertilizer Spreaders - 5. Seed Drills - 6. Shredders

KUHN NORTH AMERICA, INC. | Corporate Headquarters | 1501 West Seventh Avenue - Brodhead, WI 53520

For more information about your nearest KUHN dealer, visit our website www.kuhn.com

Information given in this document is only for informational purposes and is non-contractual. Our machines are in compliance with North American safety standards. In our literature, and for improved illustration of certain details, some safety devices may not be in operating position. When operating these machines, these devices must be operated in accordance with the requirements indicated in the operator's manuals and assembly manuals. We reserve the right to change any designs, specifications or materials listed without further notice. Machines and equipment in this document can be covered by at least one patent and/or registered design. Trademarks cited in this document may be registered in one or several countries.

Printed in USA 706451US 0921 Copyright 2021 Kuhn North America, Inc.

