



OPERATIONS & PARTS MANUAL

FOR MODELS:

- BE-DH1216N
- BE-DH1618N

PURCHASE DATE	MODEL NO.	SERIAL NUMBER
DEALER		

ASSEMBLY

This Disc Harrow has been designed with care and built by skilled workers using quality materials. Proper assembly, maintenance and safe operation practices will help you get years of satisfactory use from the Disc Harrow.

⚠ CAUTION!

The Following safety precautions should be thoroughly understood before attempting to begin assembling this machine.

1. Select an area for assembly that is clean and free of any debris which may cause persons working on the assembly to trip.
2. Do not lift heavy parts or assemblies. Use crane jack, tackle, fork trucks or another mechanical device.
3. Never put hands, or any part of the body, under blocked up assemblies if at all possible.
4. After completing assembly, thoroughly inspect the machine to be sure that all nuts, bolts, hydraulic fittings or any other fastened assemblies have been thoroughly tightened.
5. Before operating equipment, if you have any questions regarding the proper assembly or operations, contact your local dealer.
6. After initial adjustments have been made and tractor is hooked up to Disc Harrow, you are ready to start discing.
7. Lower Disc Harrow to ground and start moving forward. Your travel speed will be determined by soil condition. You may find you want more or less angle on the discs to do the job.
8. Do not disc in reverse (traveling backwards). The Disc Harrow is designed for working the soil while traveling forward only. Damage to the harrow may occur.

ASSEMBLY INSTRUCTIONS

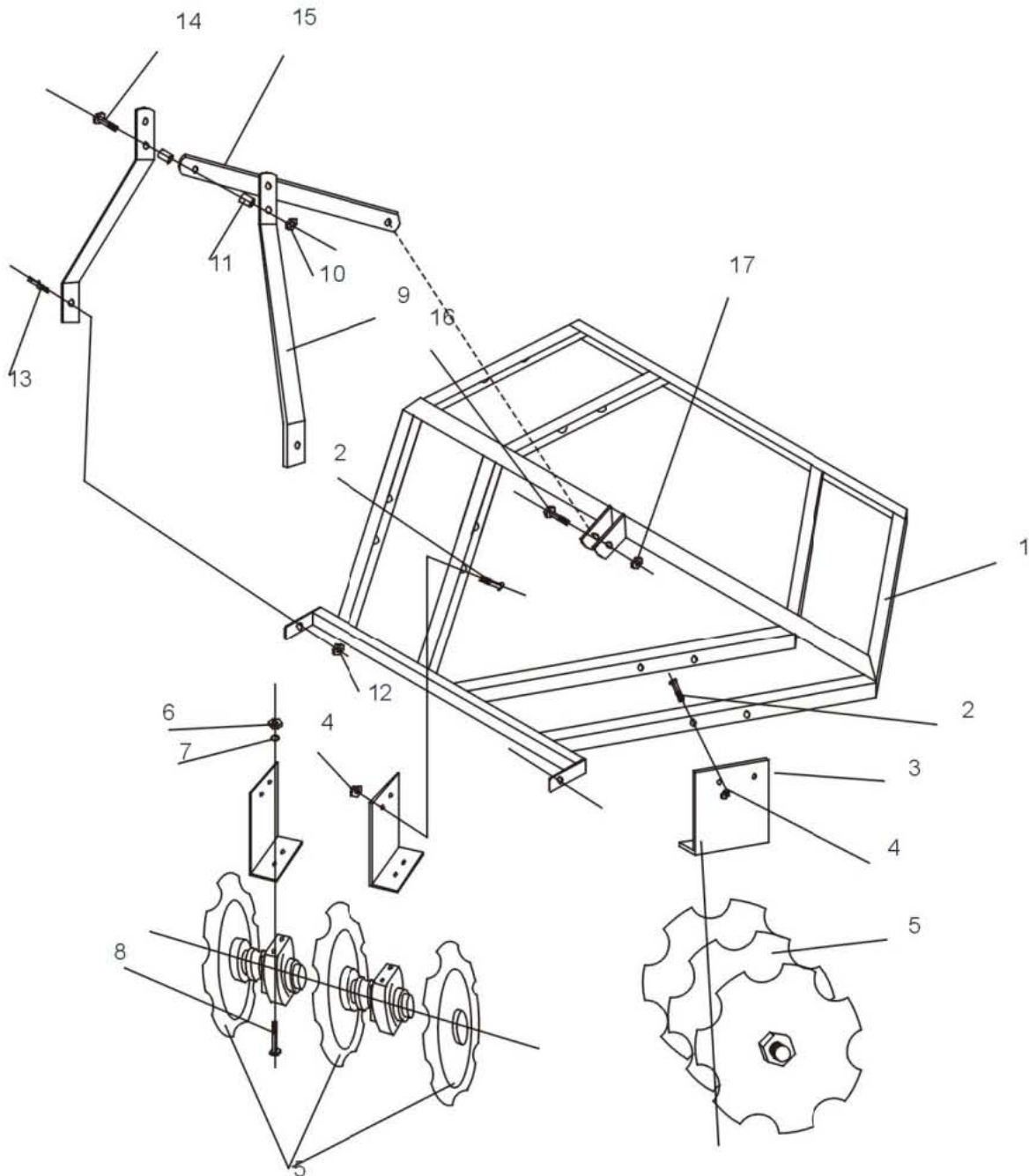
1. Unpack the Disc Harrow from shipping box.
2. Assembly part# 14, 15, 9, 11 to the Mount Frame Weldment (1).

SAFETY INSTRUCTIONS

- Always be sure the implement is in the fully raised position when in transport.
- Use care when working on slopes.
- Avoid excessive speed during operation.

EXPLODED VIEW & PARTS LIST

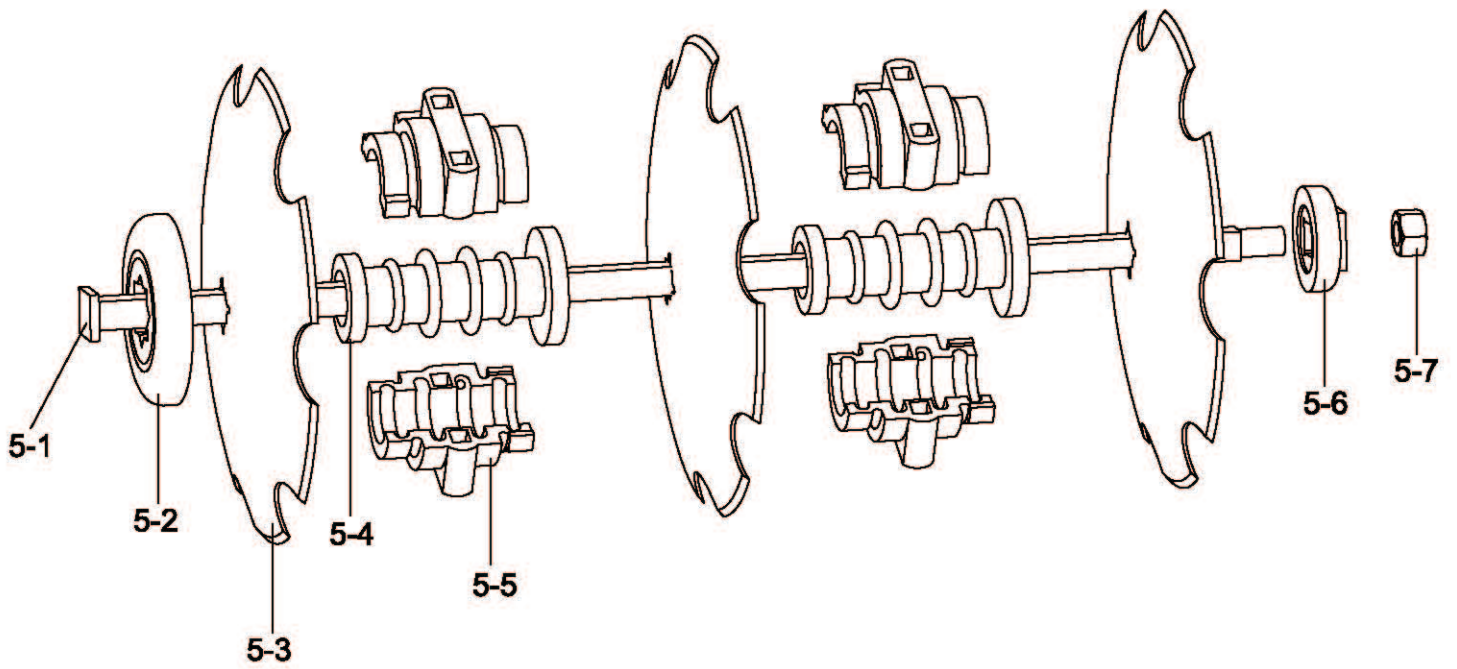
4FT 3-POINT DISC HARROW



REF.	DESCRIPTION	QTY
1	Mount Frame Weldment	1
2	Bolt M12x30	16
3	Connect Board	8
4	Lock Nut M12	16
5	Disc Harrows Assembly	4
6	Lock Nut M12	16
7	Flat Washer 12	16
8	Bolt M12x130	16
9	Side Bar	2

REF.	DESCRIPTION	QTY
10	Lock Nut M16	1
11	Steel Bush	2
12	Nut M22	2
13	Draw Pin	2
14	Bolt M16x100	1
15	Brace	1
16	Bolt M16x50	1
17	Nut M16	1

DISC HARROW ASSEMBLY



REF.	DESCRIPTION	QTY
5-1	Shaft	4
5-2	End Cap Casting-1	4
5-3	Disc	4Ft: 12
		4Ft: 16
5-4	Spacer Casting	4Ft: 8
		4Ft: 12
5-5	Spacer Holding	4
5-6	End Cap Casting-2	16
5-7	Hex Nut M24	16



BRABEREQ.COM
WGSALES@BRABEREQ.COM

PHONE: 604-850-7770
FAX: 604-850-7774
TOLL FREE PHONE: 1-877-588-3311
TOLL FREE FAX: 1-800-665-7334