



REAR DISCHARGE FINISH MOWER BE-FM84RDHDG



OPERATIONS & PARTS MANUAL

FOR MODELS:
• BE-FM84RDHDG

PURCHASE DATE	MODEL NO.	SERIAL NUMBER
DEALER		

TABLE OF CONTENTS

3	Safety Instructions
4	Training Safety
	Starting and Stopping Safety
	Operation Safety
5	Transport Safety
	Service and Maintenance Safety
	Storage Safety
6	Safety Signs
8	Hitch Assembly Instructions
	Operating Instructions
9	Field Use Preparation
	Field Operation
	Disconnecting from Tractor
	Maintenance
10	Troubleshooting
12	Exploded View & Parts List

TO THE COSTUMER

This manual contains valuable information about your new mower. It has been carefully prepared to give you helpful suggestions for operating, adjusting and servicing.

Keep this manual in a convenient place for quick and easy reference. Study it carefully, only by proper care and operation can you expect to receive the service and long life designed and built into this mower.

It is the owner's and/or operator's responsibility to:

- Read and understand the information contained in this manual.
- Operate, lubricate, assemble and maintain the equipment in accordance with all instructions and safety procedures in this manual.
- Inspect the equipment and replace or repair any parts that are damaged or worn which could cause damage, wear to other parts or cause a safety hazard.

SAFETY INSTRUCTIONS

Good safety practices not only protect you, but also the people around you. Make these practices a working part of your safety program. Be certain that everyone operating this equipment is familiar with the recommended operating and maintenance procedures and follows all the safety precautions. Most accidents can be prevented. Do not risk injury or death by ignoring good safety practices.

The alert symbol is used throughout this manual. It indicates attention is required and identifies hazards. Follow the recommended precautions.

The safety alert symbol means...

ATTENTION! BECOME ALERT! YOUR SAFETY IS INVOLVED!

CAUTION

The caution symbol indicates a potentially hazardous situation that, if not avoided, may result in minor or moderate injury. It may also be used to alert against unsafe practices.

WARNING

The Warning Symbol indicates a potentially hazardous situation that, if not avoided, could result in death or serious injury, and includes hazards that are exposed when guards are removed. It may also be used to alert against unsafe practices.

DANGER

The Danger Symbol indicates an imminently hazardous situation that, if not avoided will result in death or serious injury. This signal word is to be limited to the most extreme situations, typically for machine components that, for functional purposes, cannot be guarded.

TRAINING SAFETY

Safety is a primary concern in the design and manufacture of our products. Unfortunately, our efforts to provide safe equipment can be wiped out by a single careless act of an operator.

In addition to the design and configuration of equipment, hazard control and accident prevention are dependent upon the awareness, concern, prudence and proper training of personnel involved in the operation, transport, maintenance and storage of equipment.

It is the operator's responsibility to read and understand ALL Safety and Operating instructions in the manual and to follow them. Accidents CAN be avoided.

Working with unfamiliar equipment can lead to careless injuries. Read this manual and the manual for your tractor before assembling or operating your mower, to acquaint yourself with the machines. It is the finish mower owner's responsibility if this machine is used by any person other than yourself, to make certain that the operator, prior to operating:

1. Reads and understands the operator's manuals.
2. Is instructed in safe and proper use.

Know the controls and how to stop tractor, engine, and mower quickly in an emergency.

Read this manual and the one provided with your tractor.

Train all new personnel and review instructions frequently with existing workers. A person who has not read and understood all operating and safety instructions is not qualified to operate the machine, an untrained operator exposes himself and bystanders to possible serious injury or death.

Do not allow children to operate this machine.

STARTING AND STOPPING SAFETY

Mower operating power is supplied from tractor PTO. Refer to your tractor manual for PTO engagement and disengagement instructions. Always operate the tractor PTO in the 540 rpm speed selection. **DO NOT OVER SPEED!** Know how to stop tractor and mower quickly in case of an emergency.

When engaging PTO, the engine RPM should always be low. Once engaged and ready to start cutting, raise PTO speed to approx. 540 RPM and maintain throughout cutting operation.

Always stop the tractor, set brake, shut off the tractor engine, remove the ignition key, lower implement to the ground and allow cutter blades to come to a complete stop before dismounting tractor. Never leave equipment unattended with tractor running or with implement in raised position.

OPERATION SAFETY

The use of this equipment is subject to certain hazards which cannot be protected against by mechanical means or product design. All operators of this equipment must read and understand this entire manual, paying particular attention to safety and operating instructions, prior to using. If there is something in this manual you do not understand, ask your supervisor, or your dealer, to explain it to you.

Most accidents occur because of neglect or carelessness. Keep all helpers and bystanders at least several hundred feet from an operating finish mower. Only properly trained people should operate this machine.

When this machine is operated in populated areas or in other areas where thrown objects could injure persons or property, standard equipment safety chain shielding (which is designed to reduce the possibility of thrown objects) must be installed. Operation must be stopped when anyone comes within 100 yards(300feet).

The majority of accidents involve entanglement on the driveline, injury of bystanders by objects thrown by the rotating blades, and operators being knocked off the tractor by low hanging limbs and then being run over by the mower. Accidents are most likely to occur with machines that are loaned or rented to someone who has not read the owner's manual and is not familiar with a finish mower.

Check the tractor master shield over the PTO shaft. Make sure it is in good condition and fastened securely to the tractor. Purchase a new shield if old shield is damaged or missing.

TRANSPORT SAFETY

Review Transport Safety instructions in tractor manual before moving.

Check with local authorities regarding transport on public roads. Obey all applicable laws and regulations.

Make sure the SMV (Slow Moving Vehicle) emblem and all the lights and reflectors that are required by the local highway and transport authorities are in place, are clean, and can be seen clearly by all overtaking and oncoming traffic.

Never have the equipment in operation during transport.

Always travel at a safe speed.

Inflate transport tires to recommended pressure.

Do not drink and drive!

SERVICE AND MAINTENANCE SAFETY

Stop engine, set brake, remove ignition key, and wait for all moving parts to stop before servicing, adjusting, repairing, or unplugging.

Support the equipment with blocks or safety stands before working beneath it.

Follow good shop practices including:

- Keep service area clean and dry
- Be sure electrical outlets and tools are properly grounded
- Use adequate light for the job

Use only tools, jacks, and hoists of sufficient capacity for the job.

Replace and secure all shields removed during servicing before operating.

Use heavy leather gloves to handle sharp objects.

Failure to follow proper procedures when mounting a tire on a wheel or rim can produce an explosion, which may result in serious injury or death.

Do not allow grease or oil to build up on any deck or platform.

Where replacement parts are necessary for periodic maintenance and servicing, genuine factory replacement parts must be used to restore your equipment to original specifications.

The manufacturer will not claim responsibility for use of unapproved parts and/or accessories and other damages as a result of their use.

If equipment has been altered in any way from original design, the manufacturer does not accept any liability for injury or warranty.

A fire extinguisher and first aid kit should be kept readily accessible while performing maintenance on this equipment.

STORAGE SAFETY

Following operation, or when unhooking, stop the tractor, set the brakes, disengage the PTO, shut off the engine and remove the ignition keys.

Store the unit in an area away from human activity.

Do not permit children to play on or around the stored machine.

Make sure all parked machines are on a hard, level surface and engage all safety devices.

Support the frame on stands and blocks to provide a secure base.

SAFETY SIGNS

Keep safety signs clean and legible at all times.

Do not paint over, remove or deface any safety signs or warning signs on your equipment.

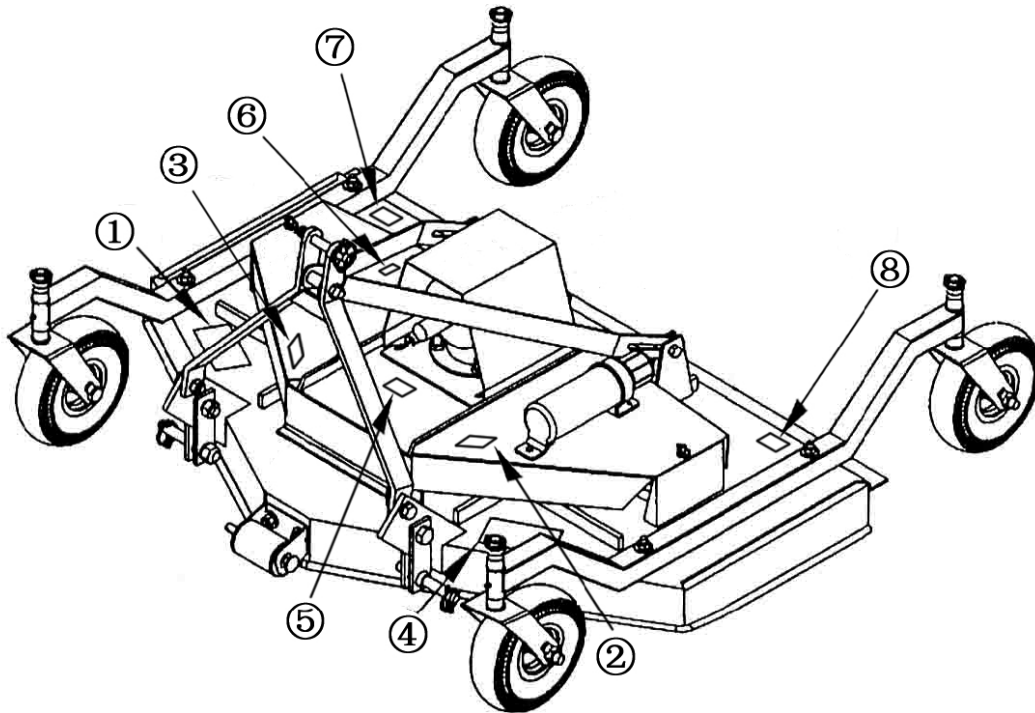
Observe all safety signs and practice the instruction on them.

Replace safety signs that are missing or have become illegible.

Replaced parts that displayed a safety sign should also display the current sign.

Safety signs are available from your Distributor.

The safety signs used on the mower and their location are shown on the following sheet along with the part number for the safety signs.



1



2

! DANGER



THROWN OBJECT HAZARD
To prevent serious injury or death:

- Do not operate unless all guards are installed and in good condition.
- Stop blade rotation if bystanders come within several hundred feet.

3

! WARNING

To prevent serious injury or death:

- Do not permit riders on the tractor or mower, including children.
- Do not allow children to operate mower.
- Operate only with guards installed and in good working condition.
- Keep away from moving parts.
- Operate only with tractor equipped with ROPS and seatbelts.
- Before mowing, clear debris from mowing area.
- Do not operate in the raised position.
- Stop engine, lower mower, set brake and wait for all moving parts to stop before dismounting.
- Support mower securely before working beneath unit.
- Transport with clean reflectors, 88FV and working lights as required by federal state, and local laws.
- Keep yourself, others, and clothing away from the rotating PTO.
- Keep other away from area to be mowed to avoid injury from flying objects.
- Do not stand between tractor and mower.
- Be careful on uneven terrain. Decrease speed when turning.
- Do not exceed a safe transport speed.

4

! WARNING



MOVING PART HAZARD
To prevent serious injury or death from moving parts:

- Close and secure guards and shields before starting.
- Keep hand, feet, hair and clothing away from moving parts.
- Disconnect and lockout power source before adjusting or servicing.
- Do not stand or climb on machine when operating

5

IMPORTANT NOTICE

BEFORE OPERATING THIS MACHINE, BE SURE TO CHECK THE FOLLOWING CHECK-POINTS (HAVING FIRST STOPPED THE TRACTOR ENGINE, DISENGAED THE P.T.O.)

1. Check oil levels (if necessary add SAE 90 EP oil)
2. Grease the driveline spiders.
3. Grease all marked point on the machine.
4. Check to be sure the nut/bolts are snug on those parts which are under the most stress (lines, blades, front linkage bolts, gear box bolts, etc.).

6

! DANGER



MIN. 160 ft.

7

! DANGER



8

HITCH ASSEMBLY INSTRUCTIONS

1. The hitch is assembled except for the two pivot bars (#35). Bolt one end of each pivot bar between the welded brackets at the back of the deck using the bolts assembled in the mower.
2. Remove the 5/8" bolt (#56) at the top of the hitch assembly. Using the same bolt, assemble with the pivot bars on both sides of the upper lift bracket (#54).

OPERATING INSTRUCTIONS

The Finishing Mower is designed to be used on a tractor with a standard category 1 three-point hitch. Using excessive power will shorten the life of the drive train components.

CONNECTING TO TRACTOR:

Park the mower and tractor on a level dry area free of debris and foreign objects.

1. Slowly back the tractor up to the machine.
2. Adjust the three-point arms to align with the mower lift pins.
3. Stop the tractor, set the parking brake and remove the ignition key before dismounting.
4. Slide the three-point arms on the lift pins and lock in place with the clips supplied.
5. With the engine on the tractor shut off, attach the PTO shaft. Both ends of the PTO have a standard 6-spline end with a spring-loaded locking collar. Turn the round collar at the ends of the PTO clockwise to slide onto the splined shafts. The spring-loaded pin in the PTO yoke must lock into the groove on the splined shaft on the gearbox and tractor. Always check to see that both ends of the PTO shaft are securely attached every time the mower is used. This should always be done with the tractor engine shut off. Attach the safety chains supplied with the PTO shaft, allowing sufficient slack for the driveline during turns and operation.
NOTE: At least one third of the telescoping length of the PTO should overlap when the mower is in operation.
6. Attach the top link on the tractor to the link pin assembled in the hitch weldment (#54). Adjust the turnbuckle on the tractor top link so that the hitch sits straight with the tractor and mower both on level ground.

FIELD USE PREPARATION

1. Read and understand the Operator's Manual and all safety signs before operating.
2. The implement and tractor should be on a dry level area, clear of debris.
3. Lower the three point arms on the tractor so they line up with the mounting pins on the implement.
4. Stop the engine and set the brake.
5. Mount the lower lift pins first and then adjust the implement angle using the turnbuckle on the top link. Check that all the clips holding the three point pins are securely in place.
6. Start the engine, and raise the implement slightly.
7. Adjust the sway blocks or chains on the tractor so the mower is centered between the rear wheels.
8. Adjust the three-point hitch arms to level the implement from side to side.
9. Adjust the turnbuckle on the top of the three-point hitch arms to level the implement from front to back.
10. Adjust the cutting height using the wheel spacers on the wheel yokes. The spacers should be set at the same height on all four wheels.
11. Check for proper air pressure in tires.
12. Check tightness of belts, bolts, and other hardware.
13. Check blades to see if they are damaged. Sharpen or replace blades if necessary.
14. Check that blade bolts are tight.
15. Clear the working area of foreign objects and check that all bystanders are standing clear before starting.
16. Start the tractor with the mower resting on the ground on all four wheels.
17. Slowly engage the PTO and bring the PTO speed up to 540 rpm for cutting.

FIELD OPERATION

1. The mower works best on dry grass. Slower cutting speed and occasional cleaning may be required on damp or wet grass.
2. The PTO must run at the full 540 rpm for a good cut. Slower speeds or double cutting could be required for very high grass.
3. Use a higher blade setting for rough areas to prevent scalping of the surface.
4. Always cut counter-clockwise so grass clippings are thrown on the grass already cut. This saves power and wear on the blades.
5. Sharpen blades if grass tears instead of cutting cleanly.
6. Slow down when cutting corners. Turning too sharply on corners can leave a small strip of grass uncut.

DISCONNECTING FROM TRACTOR

1. Park on a firm level area and clean the mower.
2. Lower the mower until the load is off the hitch arms.
3. Disconnect the hitch arms and the PTO shaft.
4. Cover the mower for storage to prevent rust.

MAINTENANCE

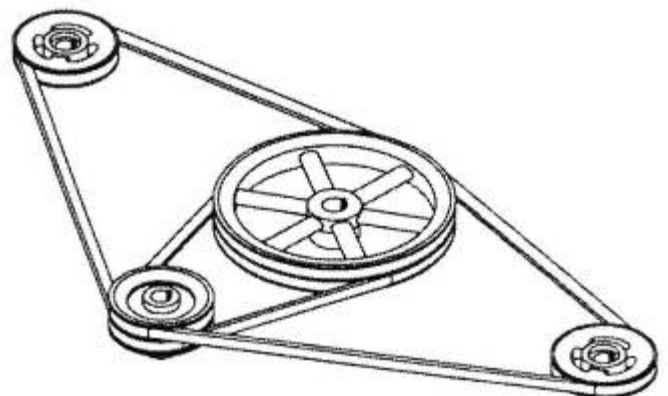
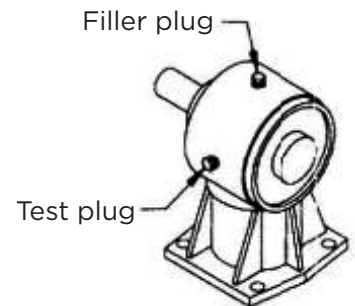
1. GEARBOX: The gearbox should be filled with SAE 90 oil level plug. Check the mower before using and at regular intervals (approx. Every 40 hours). See that this oil level is maintained.
2. GEARBOX: Grease wheel yokes, wheel bushing and PTO u-joints approximately every 8 hours. Before using the mower for the first time, grease wheel bushings until you can see the grease squeezed out at the ends of the wheel hub. Lubricate the telescoping PTO tube and the quick release collars on the ends of the shaft about every 20 hours. Clean all grease fittings before injecting grease and immediately replace any damaged or missing grease fittings. When using the safety chains supplied with the PTO shaft, the shield bearings must be kept lubricated.

NOTE: There is no grease nipple on the spindles because they use sealed bearings.

3. SHIELDING: Always keep all shielding in place and repair or replace if damaged.
4. BLADES: When replacing or grinding blades, all three blades must be replaced or reground at the same time to maintain the proper balance in the cutting unit. Block up the mower securely before attempting to remove the blades. Use heavy leather gloves to handle the blades. Be sure to tighten center bolt and lock washer securely when replacing blades. Always replace the lock washer with an extra heavy duty supplied with the spindle.
5. BELTS: Remove the belt guards to check belt tightness. The center of the belt span should deflect about 1/2" with nominal pressure. If the belts slip or are too loose, the bolts holding the gearbox must be loosened. Use the screw on the gearbox mount to tighten the belts. Lock the rod in place and re-tighten the gearbox bolts when the belts are properly tightened. Replace belt guards. Changing belts follows the same procedure as given in the preceding paragraph, except you will have to loosen the belts further to remove them.

The belt installation is shown in the following drawing.

NOTE: Belts should always be replaced in matched sets.



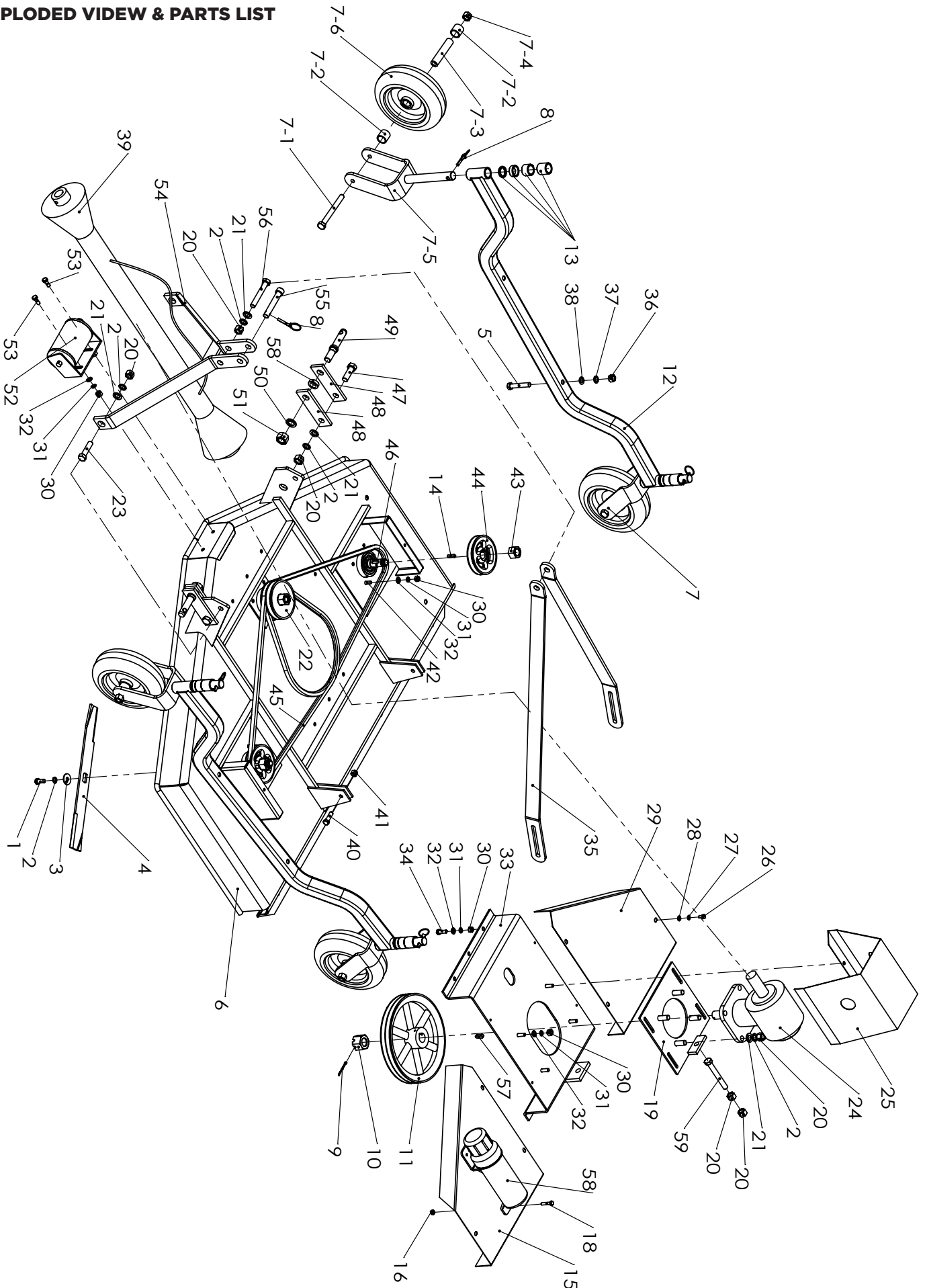
TROUBLESHOOTING

PROBLEM	POSSIBLE CAUSE	POSSIBLE REMEDY
Streaking	<ol style="list-style-type: none"> 1. Slow blade tip speed 2. Worn blade tips 3. Dull blades 4. Blades unable to cut the part of grass pressed down by tractor's tire path or mower's casters 5. Mowing too fast 6. Drive belt loose 7. Belt glazed/slipping 8. Blade loose on spindle 9. Conditions too wet for mowing 	<ol style="list-style-type: none"> 1. Operate PTO at 540 RPM. 2. Replace with correct specified blades. 3. Sharpen blades uniformly. 4. Slow tractor's ground speed but maintain 540 RPM PTO speed. 5. Slow down until cured. 6. Tighten per instructions on maintenance section in this manual. 7. Apply belt dressing or replace it with a correct specified belt. 8. Tighten blade nut securely. 9. Allow grass to dry before mowing.
Grass discharges from mower unevenly or bunches along a swath	<ol style="list-style-type: none"> 1. Grass is too high and too coarse 2. Belt slipping 3. Grass is wet 	<ol style="list-style-type: none"> 1. Slow tractor's ground speed but maintain 540 RPM PTO speed. Raise the mower for the first pass and lower to the desired cutting height for the second and cut at 90 degrees to the first pass. Raise the rear of mower high enough to allow the grass to discharge, but not too high for streaking to occur. 2. Tighten belt or replace with a correct specified belt. 3. Allow grass to dry before mowing. Slow tractor's ground speed but maintain 540 RPM PTO speed. Cut the grass at a lower height.
Damaged Belt	<ol style="list-style-type: none"> 1. Rollover, high shock loads or installation damage 	<ol style="list-style-type: none"> 1. Replace it with correct specified belt
Heavy vibration	<ol style="list-style-type: none"> 1. Blade speed is too fast 2. Broken/bent blade 3. Worn/unbalanced blade 4. Bent/broken sheave 5. Debris caught on blade 	<ol style="list-style-type: none"> 1. Do not exceed 540 RPM PTO speed. 2. Replace with correct specified blade. 3. Grind blade uniformly or replace. 4. Replace with correct specified part. 5. Clean o blade.
Belt Breakage	<ol style="list-style-type: none"> 1. High shock loads 	<ol style="list-style-type: none"> 1. Avoid hitting ground and large obstructions with the mower. 2. Check sheave for proper alignment and foreign material. Ensure proper belt tension. Avoid hitting the ground and large obstructions with the mower.
Belt rollover	<ol style="list-style-type: none"> 1. Damaged belt 2. Foreign object in sheave groove 3. Worn sheave groove 	<ol style="list-style-type: none"> 1. Replace it with correct specified belt. 2. Inspect all sheave grooves for rust, paint or other foreign material. Remove these if present. 3. Replace with correct specified sheave.
Blade is scraping ground	<ol style="list-style-type: none"> 1. Mower too low 2. Field is ridged 3. Field is too wet 	<ol style="list-style-type: none"> 1. Raise mower - reset wheels. 2. Cut field at a different angle. 3. Stop and wait until is dried.

PROBLEM	POSSIBLE CAUSE	POSSIBLE REMEDY
Belt Slipping	<ol style="list-style-type: none"> 1. Belt loose 2. Belt glazed 3. Oil on belt 4. Mower is overloading, grass is too tall or heavy 5. Oil on belt from over lubrication 6. Belt hung or rubbing 	<ol style="list-style-type: none"> 1. Tighten or replace with correct specified belt. 2. Use belt dressing or replace it. 3. Clean or replace. 4. Slow tractor's ground speed but maintain 540 RPM PTO speed. Cut grass twice. Raise the mower for the first pass and lower to the desired cutting height for the second and cut at 90 degrees to the first pass. Cut a partial swath only. 5. Clean lubricant from belt and sheaves with a clean rag. Replace oil soaked belts. Be sure to follow operator's manual recommendations. 6. Check belt for free travel in sheaves. Check under mower deck and spindles for debris or other foreign material and remove if any is present.
Gearbox overheating	<ol style="list-style-type: none"> 1. Low on lubricant 2. Improper type lubricant 3. Excessive trash build-up around gearbox. 	<ol style="list-style-type: none"> 1. Fill to proper level. 2. Replace with proper lubricant. 3. Remove trash.
Gearbox leaking	<ol style="list-style-type: none"> 1. Damaged oil seal 2. Bent shaft 3. Shaft rough in oil seal area 4. Oil seal installed wrong 5. Oil seal not sealing in the housing 	<ol style="list-style-type: none"> 1. Replace seal. 2. Replace oil seal and shaft. 3. Replace or repair shaft. 4. Replace seal. 5. Replace seal or use a sealant on outside diameter of seal. 6. Drain oil to proper level. 7. Replace gearbox 8. Replace gasket 9. Tighten bolts.
Gearbox noisy	<ol style="list-style-type: none"> 1. Worn bearings 2. Low oil in gearbox 	<ol style="list-style-type: none"> 1. Replace bearing 2. Check level and add oil
Blades wear too fast	<ol style="list-style-type: none"> 1. Cutting in sandy conditions 2. Cutting in rocky conditions 3. Blades hitting ground 	<ol style="list-style-type: none"> 1. Increase cutting height. 2. increase cutting height, remove rocks. 3. Increase cutting height.
Mower seems to require excessive power.	<ol style="list-style-type: none"> 1. Advancing into grass too rapidly 2. Hitting ground. 3. Worn or dull blades. 4. Tractor not large enough 5. Grass wet 6. Grass too tall and heavy 	<ol style="list-style-type: none"> 1. Reduce forward travel speed 2. Raise mower and reset wheels. 3. Sharpen or replace blades. 4. Use larger horsepower tractor 5. Allow grass to dry before mowing. 6. Slow ground speed of tractor but, keep engine running at full PTO RPM. Make two passes, raise mower for first pass and lower for second pass.
Mower moves from side to side when cutting.	<ol style="list-style-type: none"> 1. Loose tractor sway chains, bars or sway blocks improperly installed. 	<ol style="list-style-type: none"> 1. Adjust sway chains, bars or sway blocks.

Note: Since the oil heats, the gearbox may reach a rather high temperature during work and its out surface may become "hot" to touch. This is normal and will cause no damage. It is, however important to always check that the oil is at the correct level and of the indicated type.

EXPLODED VIEW & PARTS LIST



PARTS LIST

REF	PART NO.	DESCRIPTION	QTY
1	020504	Blade Bolt M16x40	2
2	020604	Lock washer 16	12
3	020003	Flat Washer 18	3
4	020504	Cutting Blade 5'	3
	020604	Cutting Blade 6'	3
	020704	Cutting Blade 7'	3
5	020005	Hex Bolt M14x90	4
6	020506	Main Body 5'	1
	020606	Main Body 6'	1
	020706	Main Body 7'	1
7	020007	Jockey Wheel Assembly	4
8	020008	Lynch Pin	5
9	020009	Cotter Pin Ø5	1
10	020010	Gearbox Hex Nut	1
11	020511	Main Output Pulley 5'	1
	020611	Main Output Pulley 6'	1
	020711	Main Output Pulley 7'	1
12	020512	Axle Beam Weldment 5'	2
	020612	Axle Beam Weldment 6'	2
	020712	Axle Beam Weldment 7'	2
13	020013	Distance Spacer 6mm	4
		Distance Spacer 12mm	4
		Distance Spacer 24mm	4
		Distance Spacer 39mm	4
14	020014	Round End Key8x7x30	3
15	020515	L.H. Pulley Guard 5'	1
	020615	L.H. Pulley Guard 6'	1
	020715	L.H. Pulley Guard 7'	1
16	020016	Lock Nut M6	2
17	020017	Manual Holder	1
18	020018	Hex Bolt M6x16	2
19	020019	Gearbox Base Plate	1
20	020020	Hex Nut M16	11
21	020021	Flat Washer 16	9
22	020522	Double Pulley 5': FM52	1
	020622	Double Pulley 6': FM62	1
	020722	Double Pulley 7': FM62	1
23	020023	Hex Bolt M16x50	2
24	020024	Gearbox	1
25	020025	PTO guard	1
26	020026	Hex Nut M8	10
27	020027	Lock Washer 8	6
28	020028	Flat Washer 8	6
29	020529	R.H. Pulley Guard 5'	1
	020629	R.H. Pulley Guard 6'	1
	020729	R.H. Pulley Guard 7'	1
30	020030	Hex Nut M10	24
31	020031	Lock Washer 10	24
32	020032	Flat Washer 10	24
33	020033	Gearbox Mounting Plate	1

REF	PART NO.	DESCRIPTION	QTY
34	020034	Hex Bolt M10x30	6
35	020535	Pivot Bar 5'	2
	020635	Pivot Bar 6'	2
	020735	Pivot Bar 7'	2
36	020036	Hex Nut M14	4
37	020037	Lock Washer 14	4
38	020038	Flat Washer 14	4
39	020539	PTO 5': 4-37QDQD	1
	020639	PTO 6': 4-37QDQD	1
	020739	PTO 7': 4-37QDQD	1
40	020040	Hex Bolt M12x45	2
41	020041	Lock Nut M12	2
42	020042	Hex Bolt M10x35	12
43	020043	Hex Nut M24	3
44	020544	Single Pulley 5'	2
	020644	Single Pulley 6'	2
	020744	Single Pulley 7'	2
45	020545	Belts 5'	2
	020645	Belts 6'	2
	020745	Belts 7'	2
46	020046	Spindle Assembly	3
47	020047	Hex Bolt M16x55	2
48	020048	Lift Bracket	4
49	020049	Hitch Pin	2
50	020050	Lock Washer 22	2
51	020051	Hex Nut M22	2
52	020053	Front Roller Assembly	1
53	020053	Hex Bolt M10x25	2
54	020054	Lift Arm	1
55	020055	Center Hitch Pin	1
56	020056	Hex Bolt M16x110	1
7-1	020057	Hex Bolt M14x150	4
7-2	020058	Spacer	8
7-3	020059	Sleeve	4
7-4	020060	Hex Nut M14	4
7-5	020061	Wheel Yoke	4
7-6	020062	Wheel	4
57	020063	Gearbox Key 10x8x38	1
58	020064	Bushing Ø 34X3.5	2
59	020065	Bolt M16*120	1



BRABEREQ.COM
WGSALLES@BRABEREQ.COM

PHONE: 604-850-7770
FAX: 604-850-7774
TOLL FREE PHONE: 1-877-588-3311
TOLL FREE FAX: 1-800-665-7334